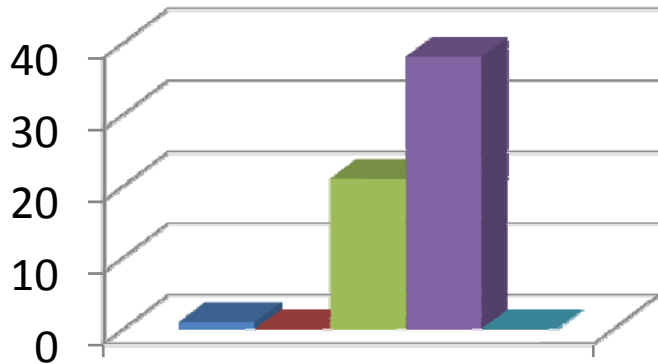
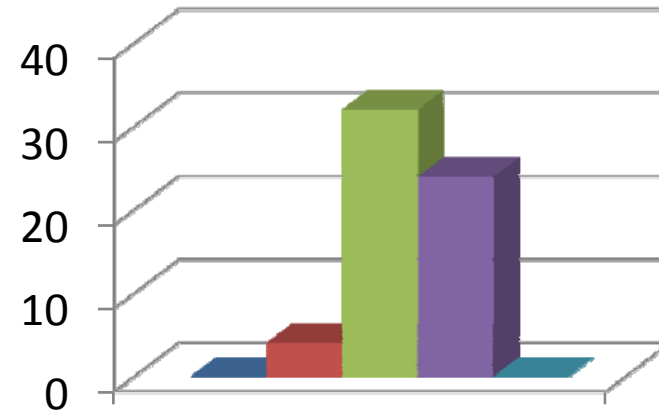


# Dr.P.Jyothi Kumari



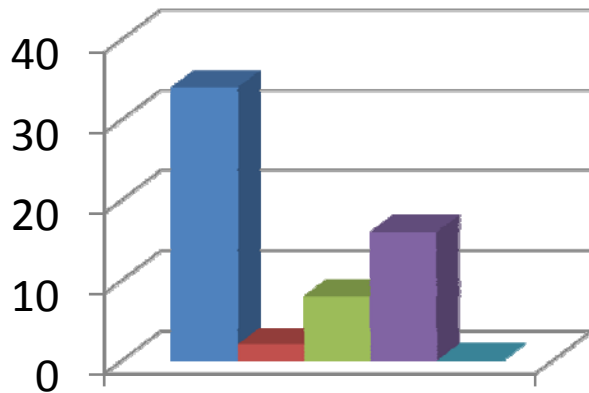
**How much of the syllabus was covered by the teacher?**

- Below 30%
- 30 - 54%
- 55 - 69%
- 70 - 84%
- 85 - 100%



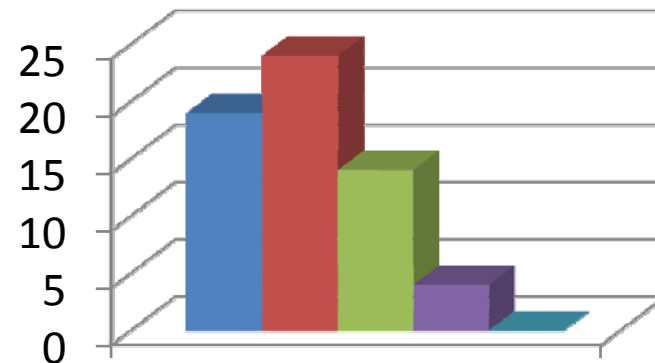
**How well did your teacher prepare for the classes?**

- Thoroughly
- Satisfactorily
- Poorly
- Indifferently
- Won't teach at all



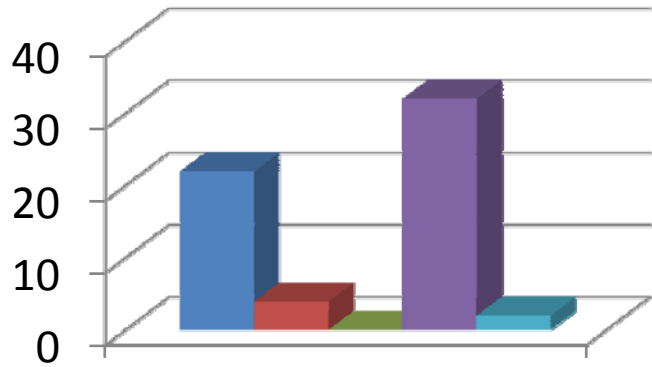
**How well is the teacher able to communicate?**

- Always effective
- Sometimes effective
- Just satisfactorily
- Generally ineffective
- Very poor communication



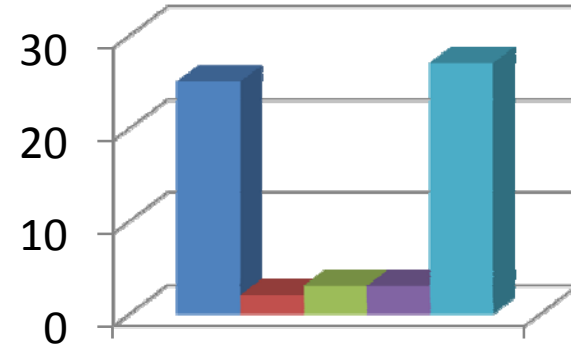
**The teacher's approach to teaching can best be described as**

- Excellent
- Very Good
- Good
- Fair
- Poor



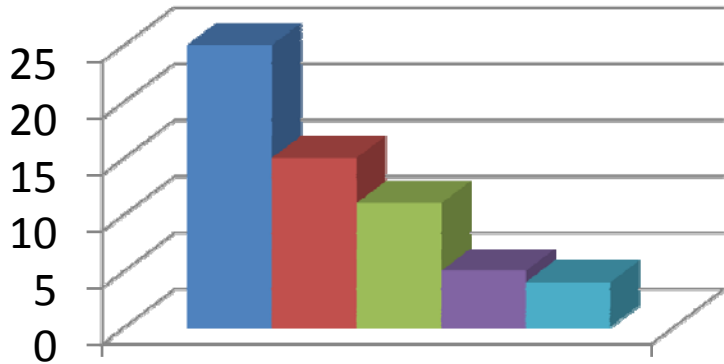
**Fairness of the internal evaluation process by the teacher**

- Always Fair
- Usually Fair
- Sometimes unfair
- Usually unfair
- Unfair



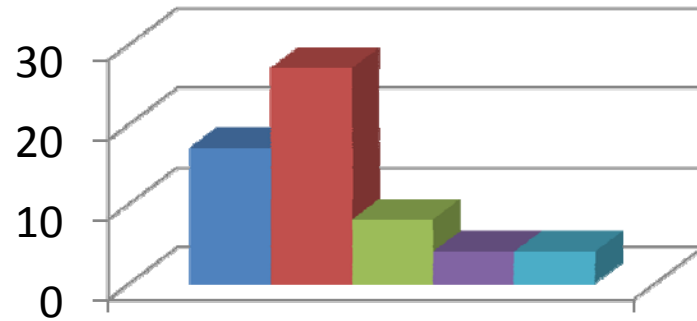
**Was your performance in assignments discussed with you?**

- Everytime
- Usually
- Occasionally/Sometimes
- Rarely
- Never



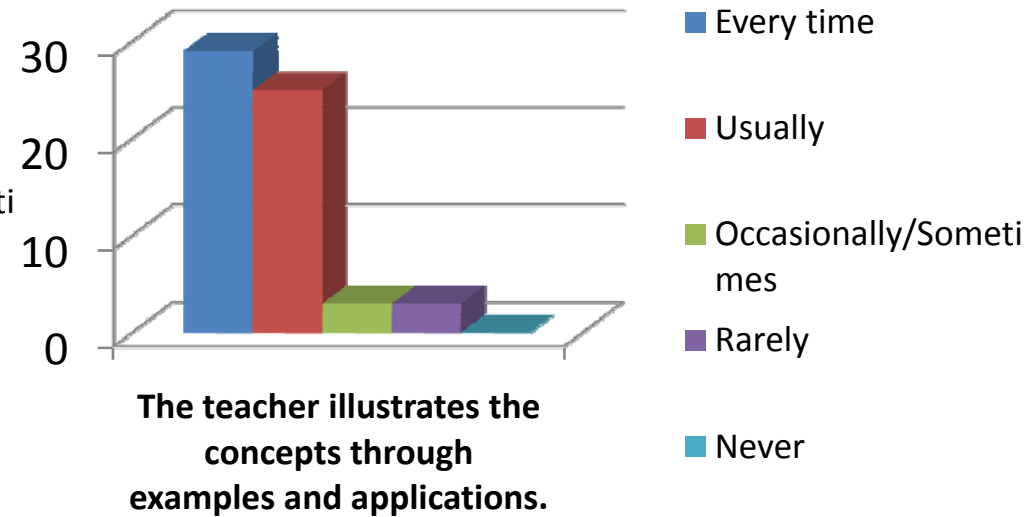
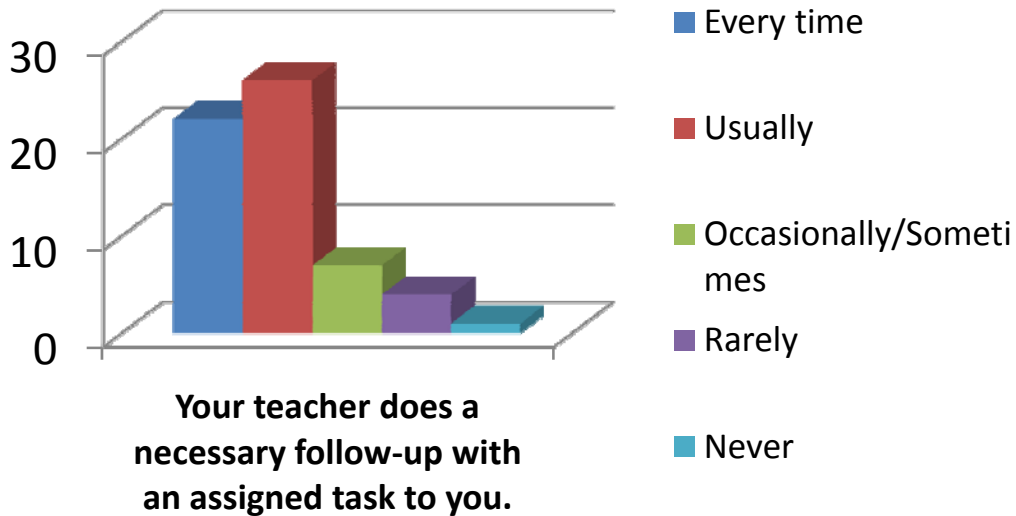
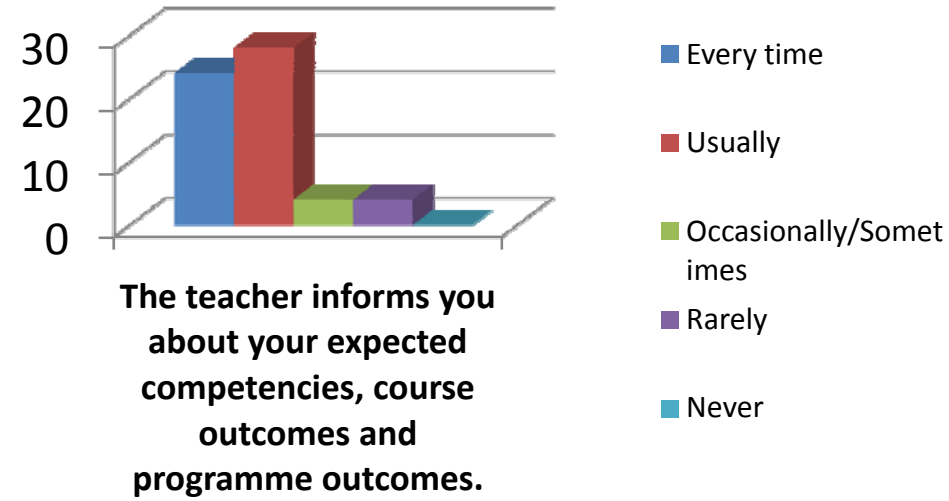
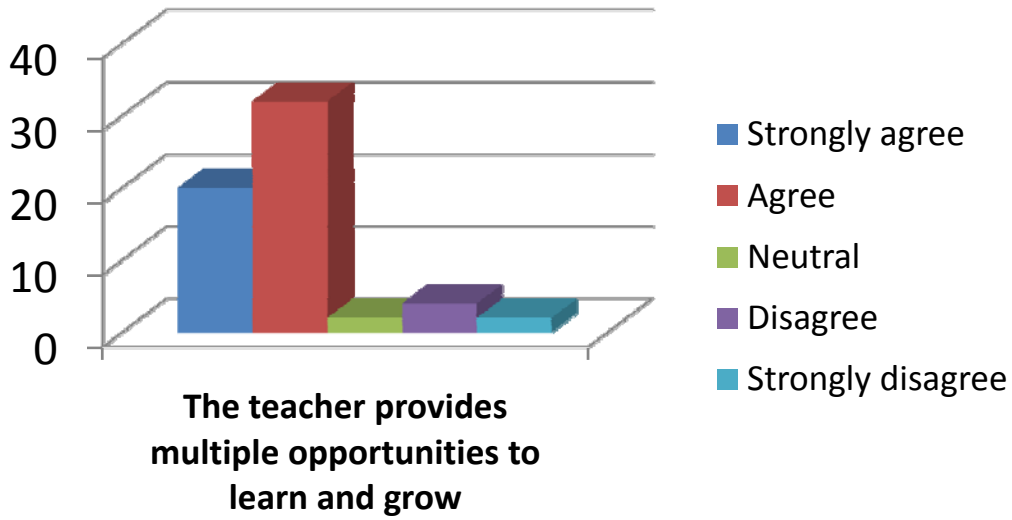
**The teacher takes active interest in arranging field visits for students**

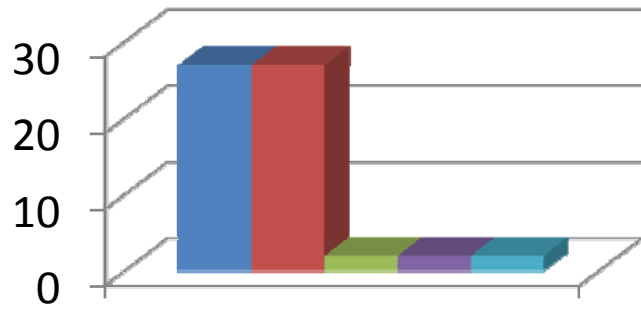
- Regularly
- Often
- Sometimes
- Rarely
- Never



**The teaching process in the classroom facilitates you in cognitive, social and emotional growth.**

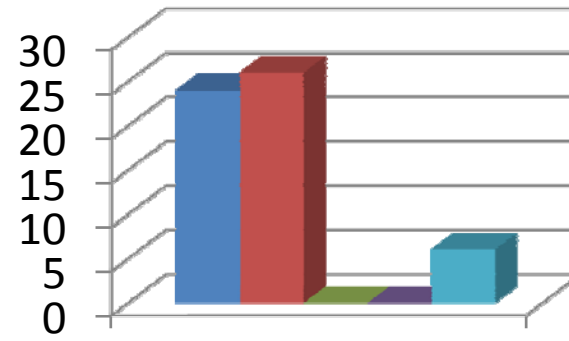
- Significantly
- Very Well
- Moderately
- Marginally
- Not at all





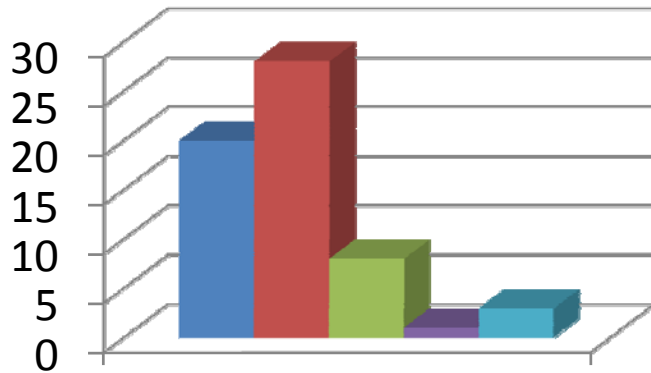
**The teacher identifies your strengths and encourage you with providing right level of challenges.**

- Fully
- Reasonably
- Partially
- Slightly
- Unable to



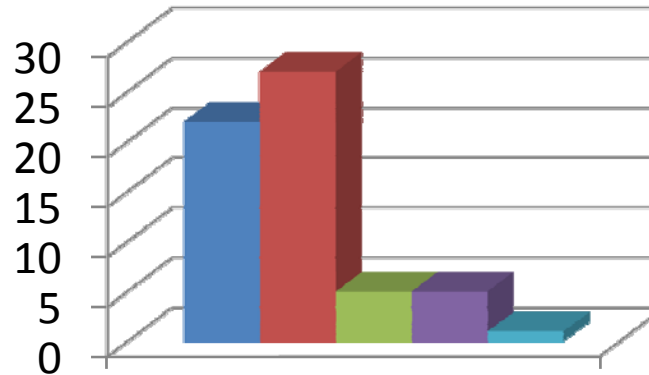
**Teacher is able to identify your weaknesses and help you to overcome them.**

- Every time
- Usually
- Occasionally/Sometimes
- Rarely
- Never



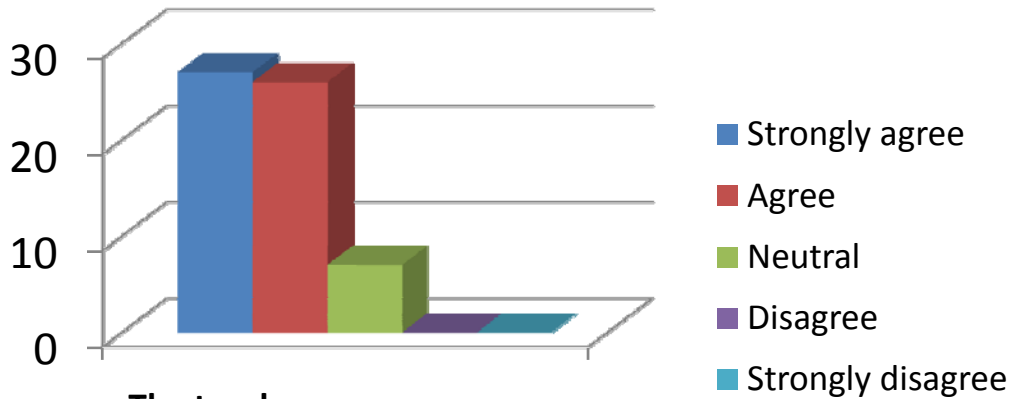
**The teacher makes effort to engage students in the monitoring, review and continuous quality improvement of the teaching learning process.**

- Strongly agree
- Agree
- Neutral
- Disagree
- Strongly disagree

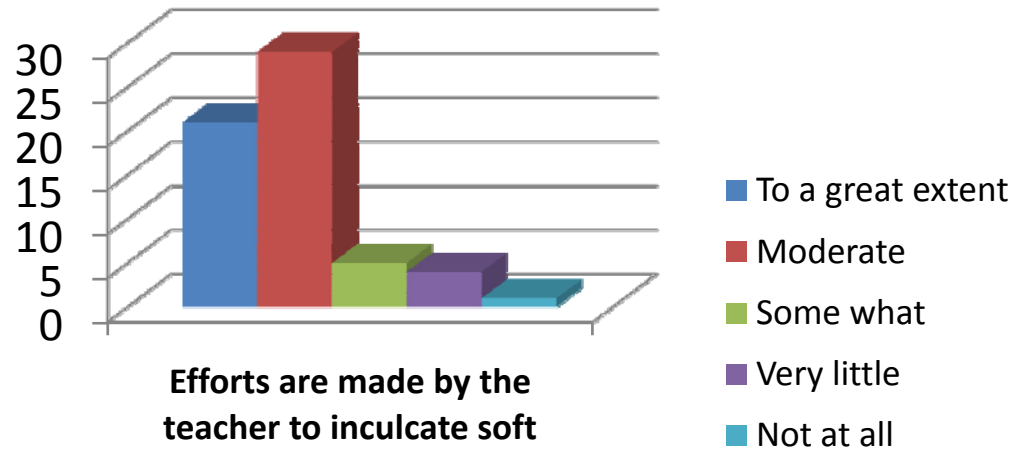


**The teacher uses the student centric methods, such as experiential learning, participative learning and problem solving for enhancing learning experiences.**

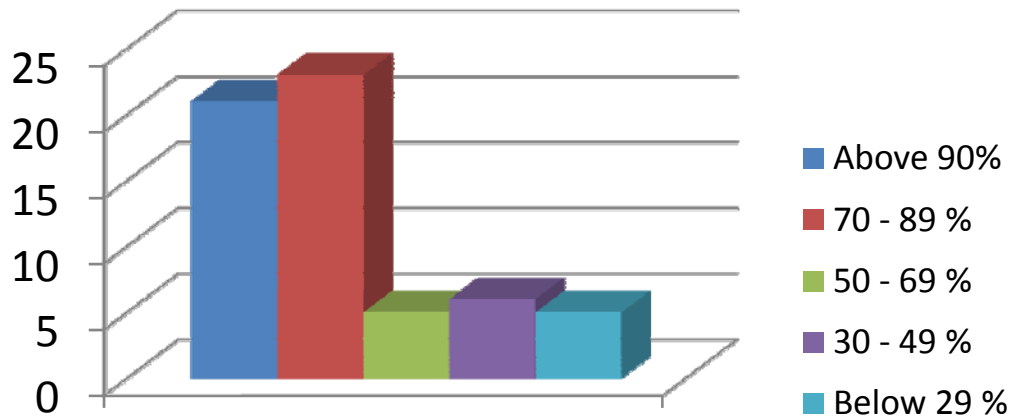
- To a great extent
- Moderate
- Some what
- Very little
- Not at all



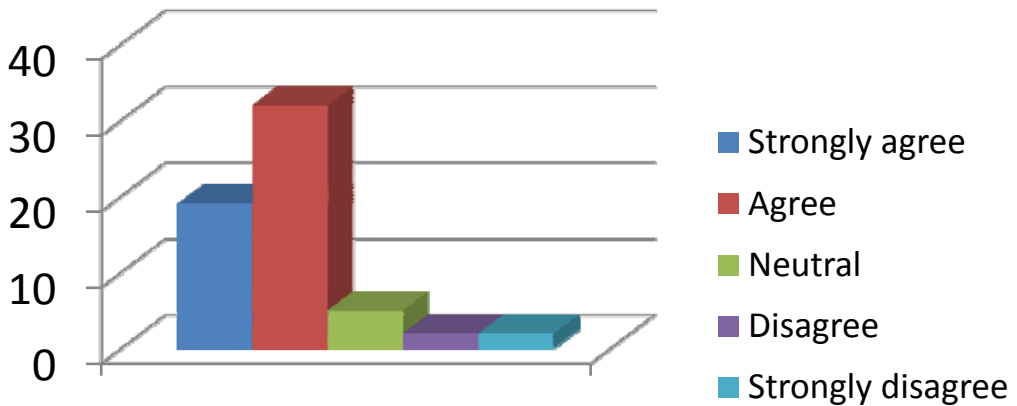
**The teacher encourages you to participate in extracurricular activities.**



**Efforts are made by the teacher to inculcate soft skills, life skills and employability skills to make you ready for the world of work.**

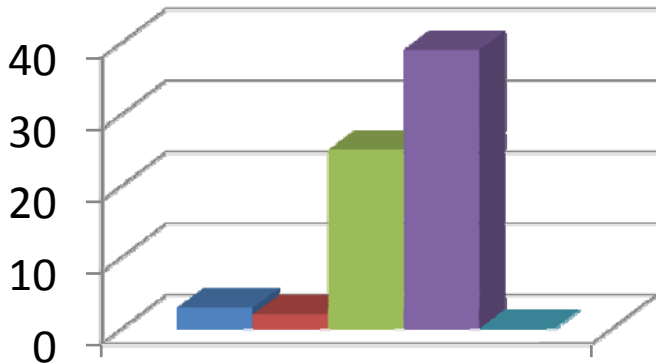


**The teacher uses ICT tools such as LCD projector, Multimedia, etc. while teaching**

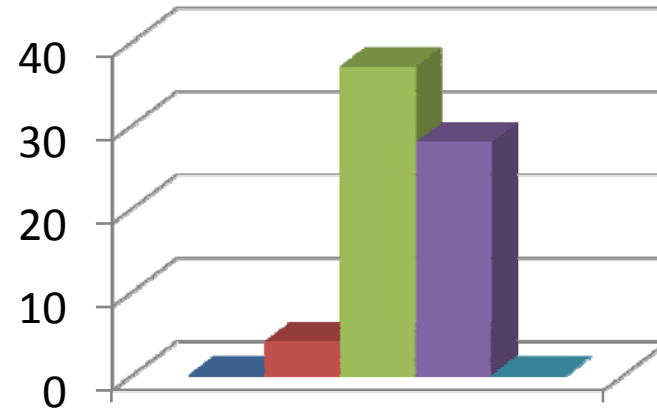


**The overall quality of teaching-learning process in the class is very good.**

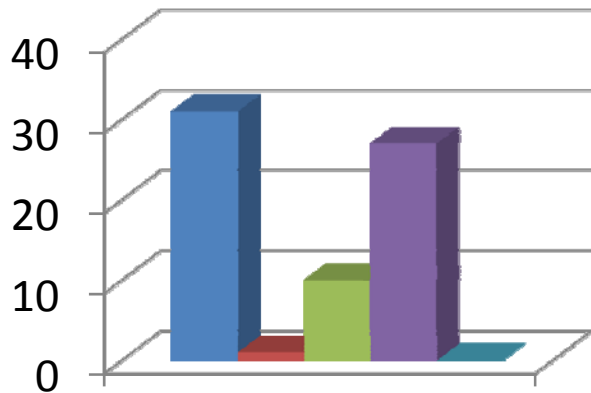
# Mrs.A.Padmavathi



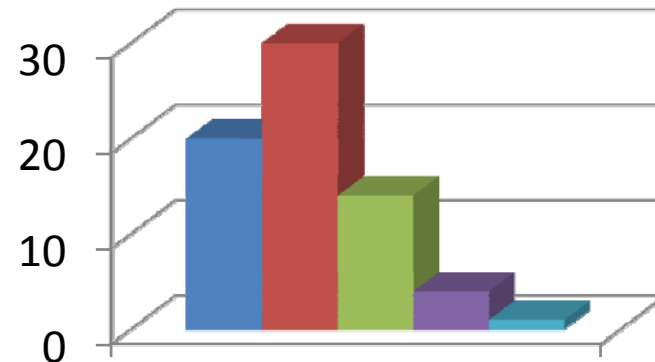
**How much of the syllabus was covered by the teacher?**



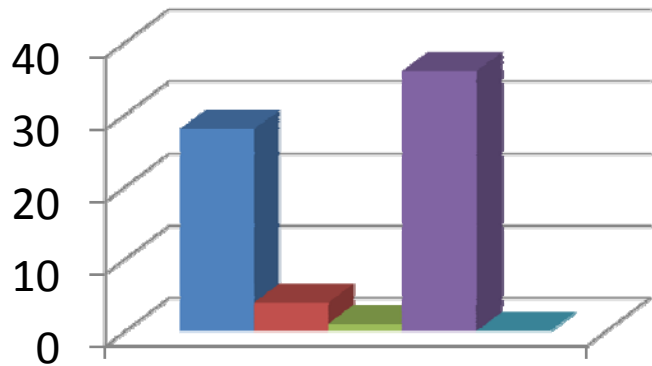
**How well did your teacher prepare for the classes?**



**How well is the teacher able to communicate?**

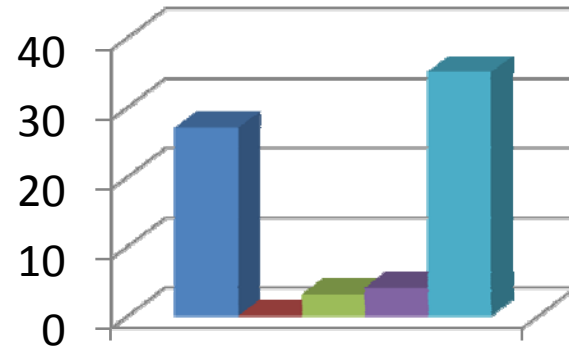


**The teacher's approach to teaching can best be described as**



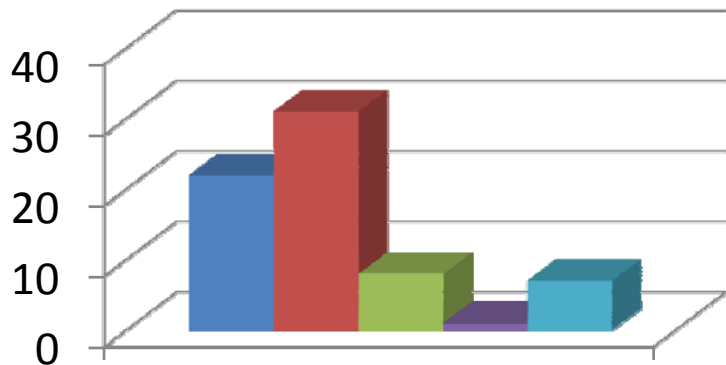
**Fairness of the internal evaluation process by the teacher**

- Always Fair
- Usually Fair
- Sometimes unfair
- Usually unfair
- Unfair



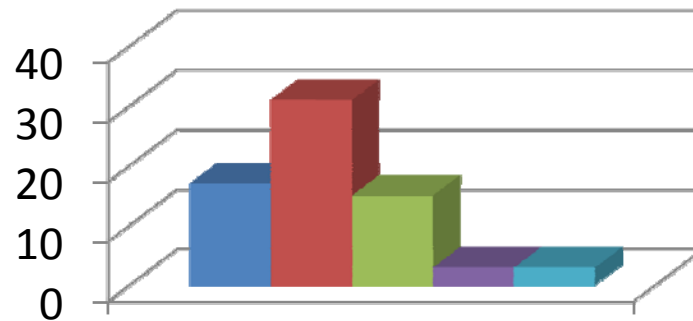
**Was your performance in assignments discussed with you?**

- Evertime
- Usually
- Occasionally/Sometimes
- Rarely
- Never



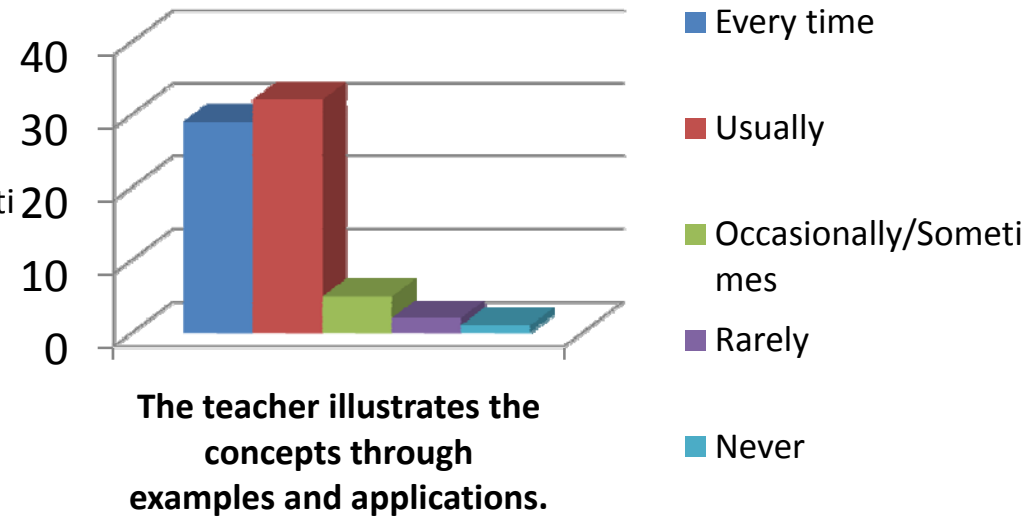
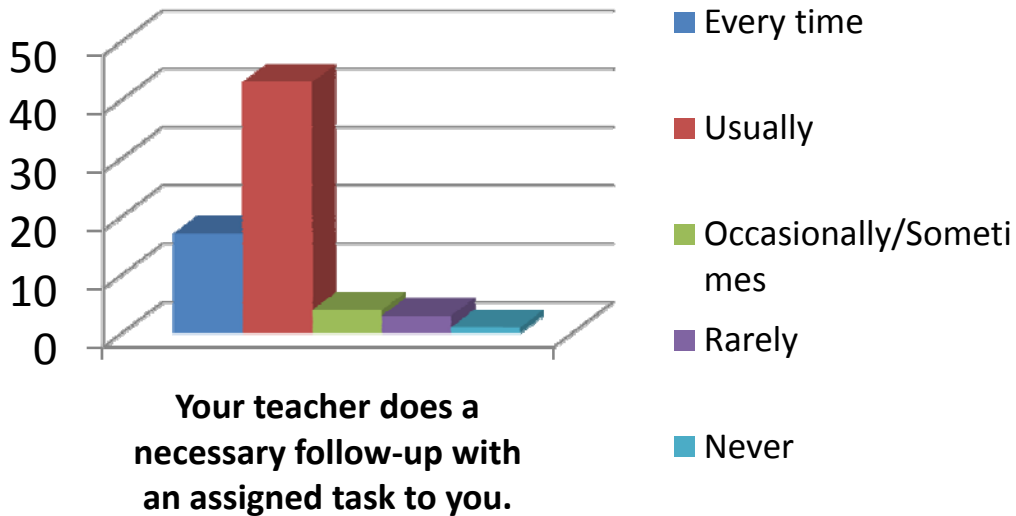
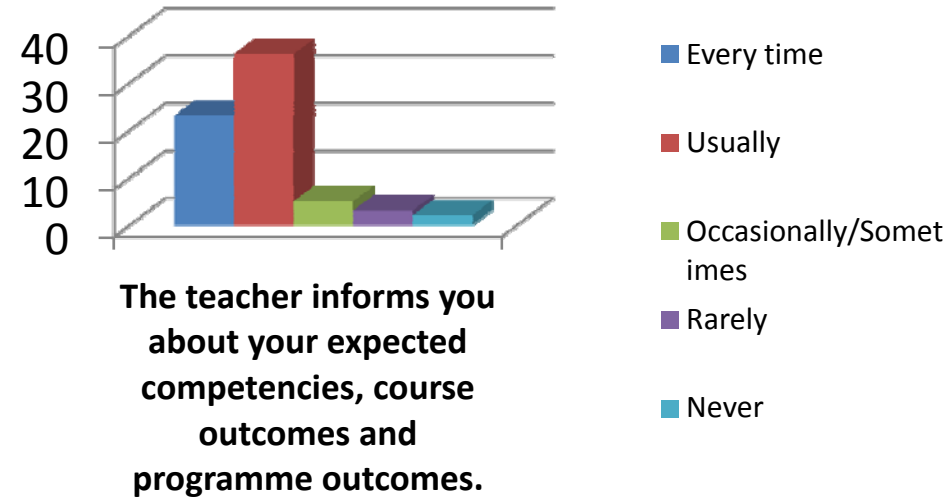
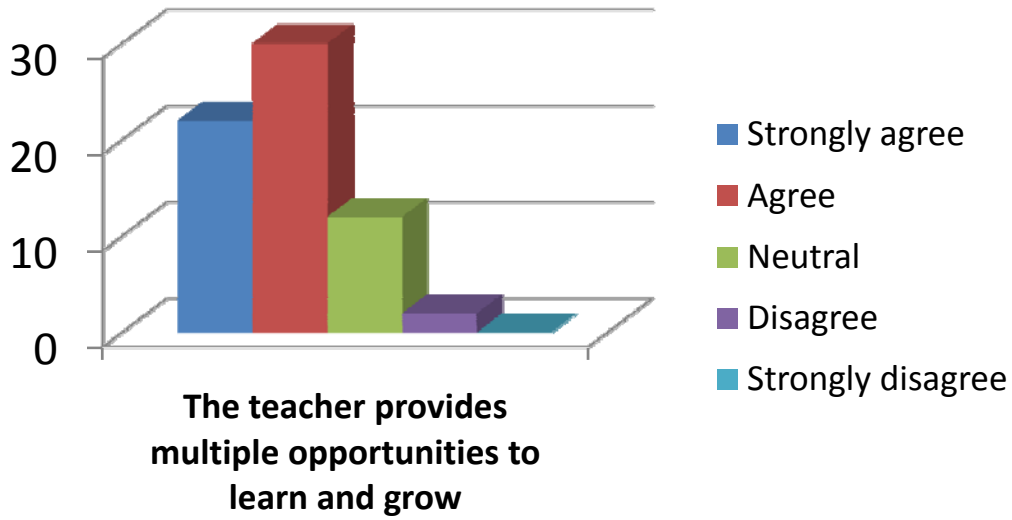
**The teacher takes active interest in arranging field visits for students**

- Regularly
- Often
- Sometimes
- Rarely
- Never

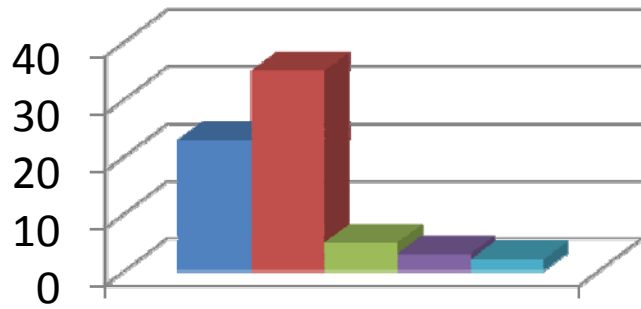


**The teaching process in the classroom facilitates you in cognitive, social and emotional growth.**

- Significantly
- Very Well
- Moderately
- Marginally
- Not at all

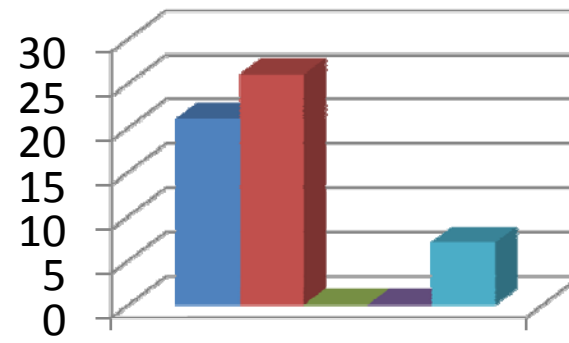






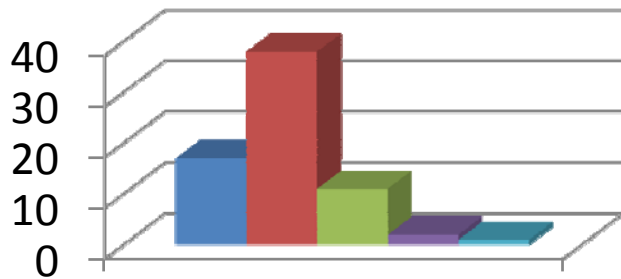
**The teacher identifies your strengths and encourage you with providing right level of challenges.**

- Fully
- Reasonably
- Partially
- Slightly
- Unable to



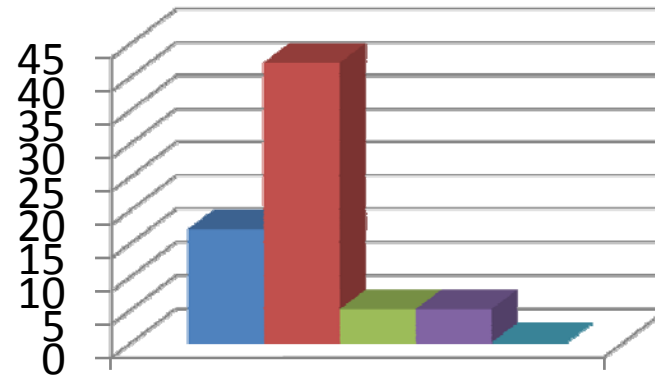
**Teacher is able to identify your weaknesses and help you to overcome them.**

- Every time
- Usually
- Occasionally/Sometimes
- Rarely
- Never



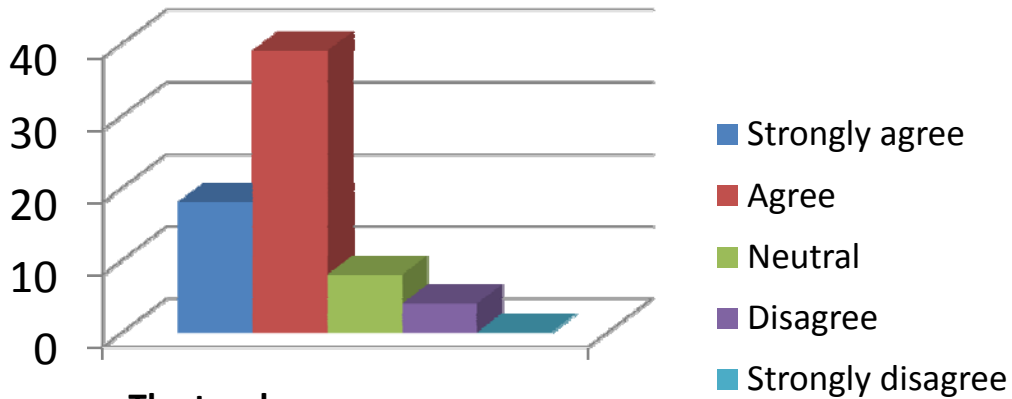
**The teacher makes effort to engage students in the monitoring, review and continuous quality improvement of the teaching learning process.**

- Strongly agree
- Agree
- Neutral
- Disagree
- Strongly disagree

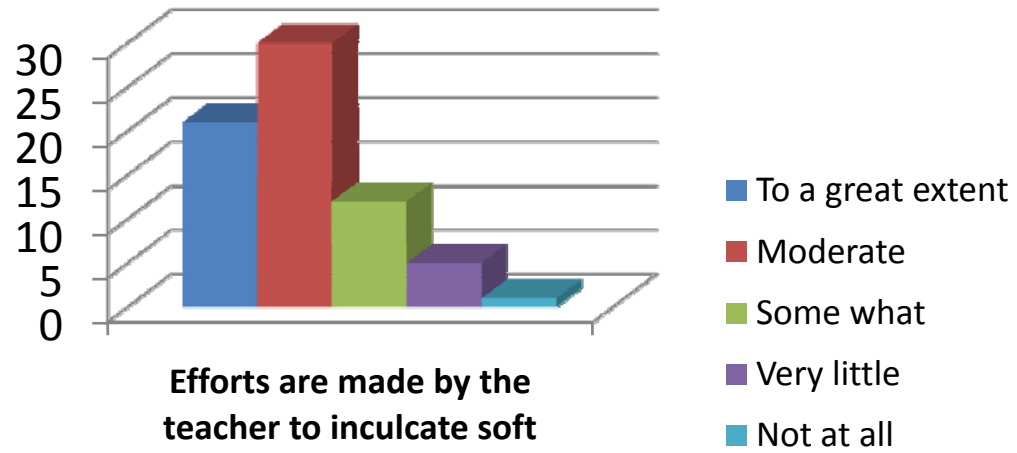


**The teacher uses the student centric methods, such as experiential learning, participative learning and problem solving for enhancing learning experiences.**

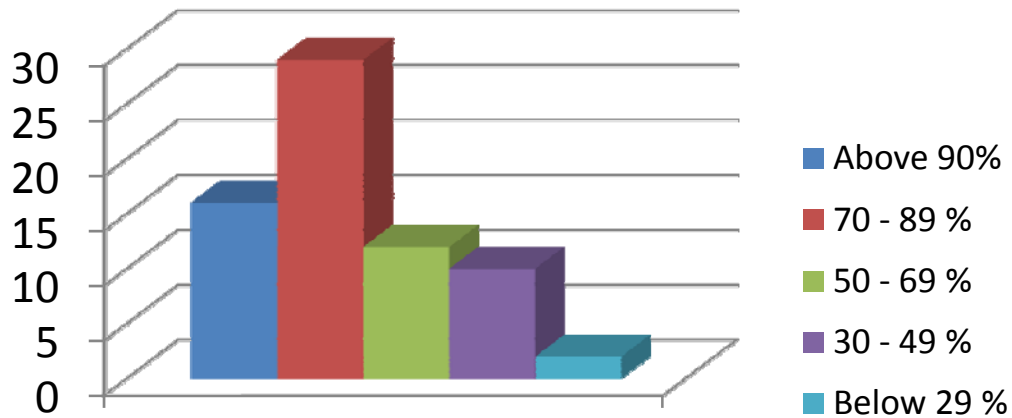
- To a great extent
- Moderate
- Some what
- Very little
- Not at all



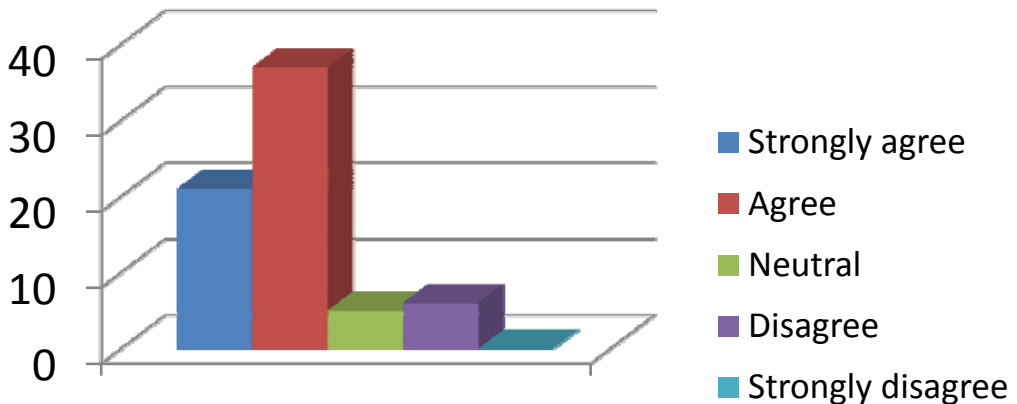
**The teacher encourages you to participate in extracurricular activities.**



**Efforts are made by the teacher to inculcate soft skills, life skills and employability skills to make you ready for the world of work.**

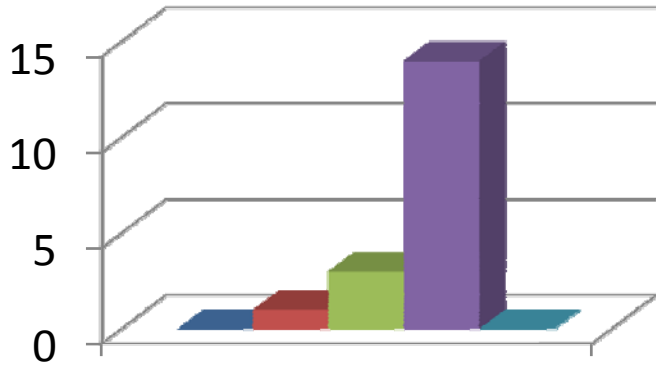


**The teacher uses ICT tools such as LCD projector, Multimedia, etc. while teaching**



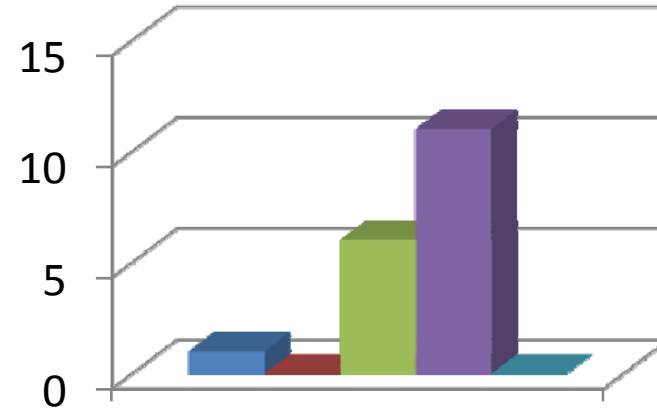
**The overall quality of teaching-learning process in the class is very good.**

# Sr.P.Sunila Rani



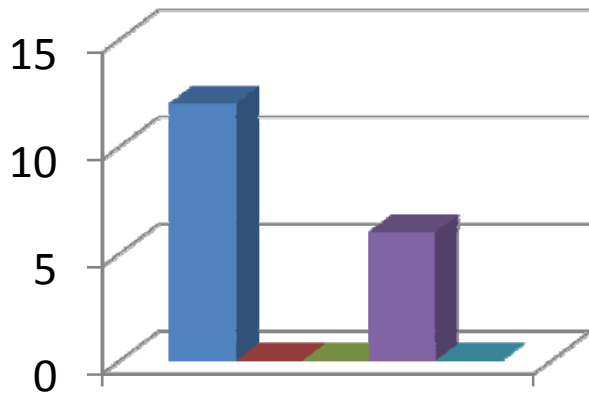
**How much of the syllabus was covered by the teacher?**

- Bellw 30%
- 30 - 54%
- 55 - 69%
- 70 - 84 %
- 85 - 100 %



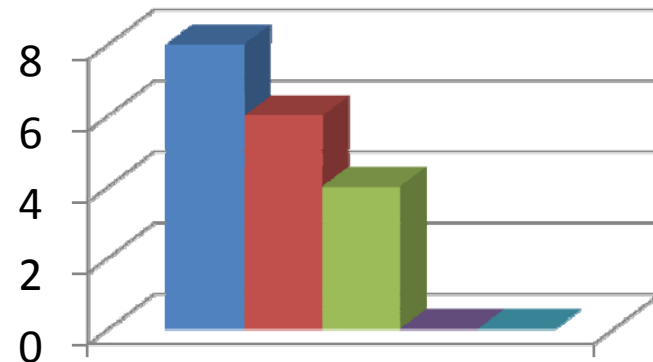
**How well did your teacher prepare for the classes?**

- Thoroughly
- Satisfactorily
- Poorly
- Indifferently
- Won't teach at all



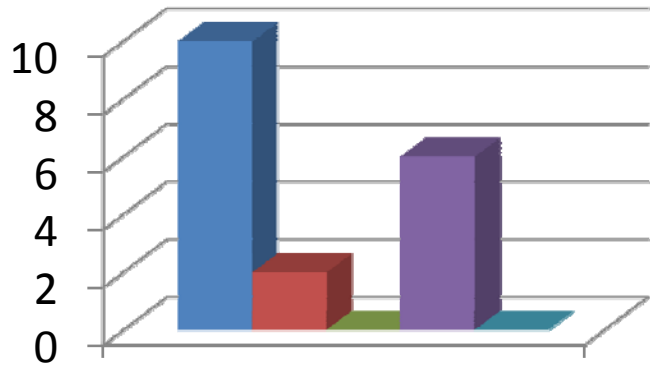
**How well is the teacher able to communicate?**

- Always effective
- Sometimes effective
- Just satisfactorily
- Generally ineffective
- Very poor communication



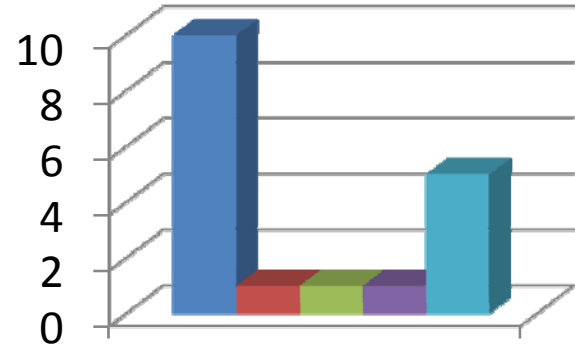
**The teacher's approach to teaching can best be described as**

- Excellent
- Very Good
- Good
- Fair
- Poor



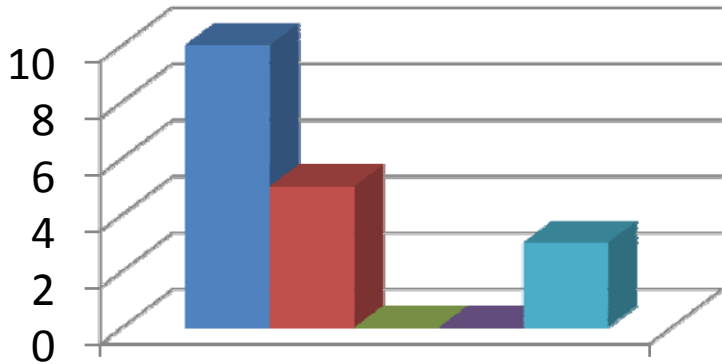
**Fairness of the internal evaluation process by the teacher**

- Always Fair
- Usually Fair
- Sometimes unfair
- Usually unfair
- Unfair



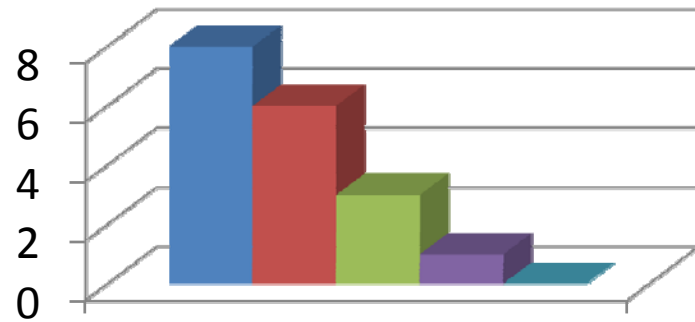
**Was your performance in assignments discussed with you?**

- Evertime
- Usually
- Occasionally/Sometimes
- Rarely
- Never



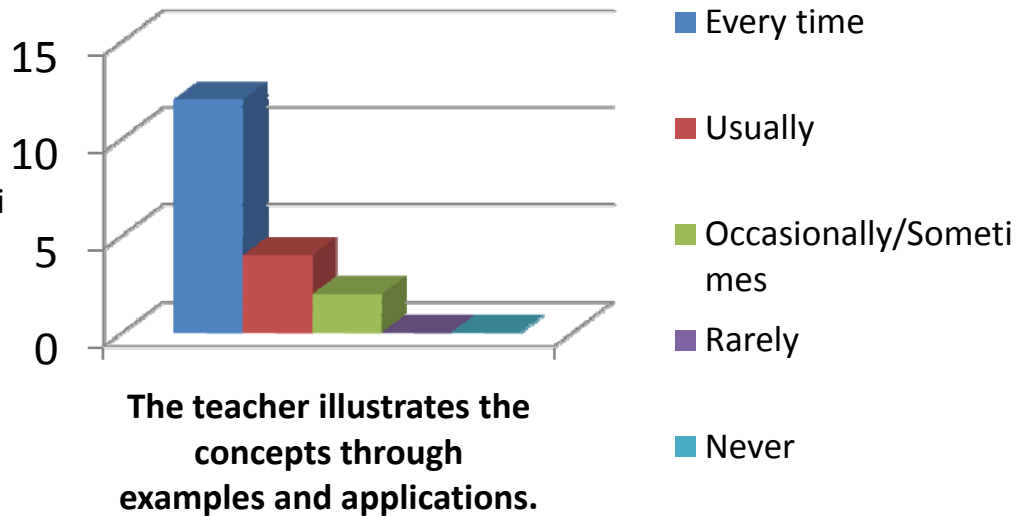
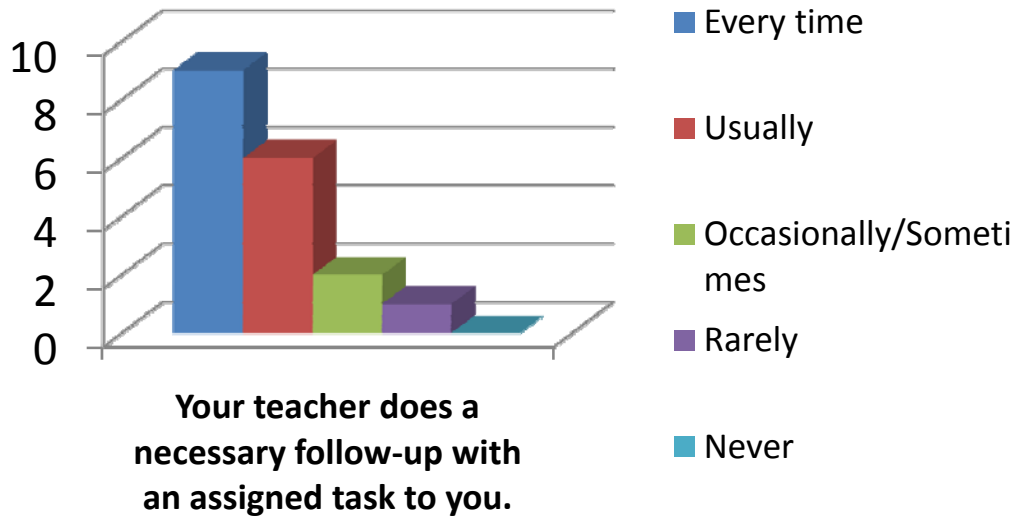
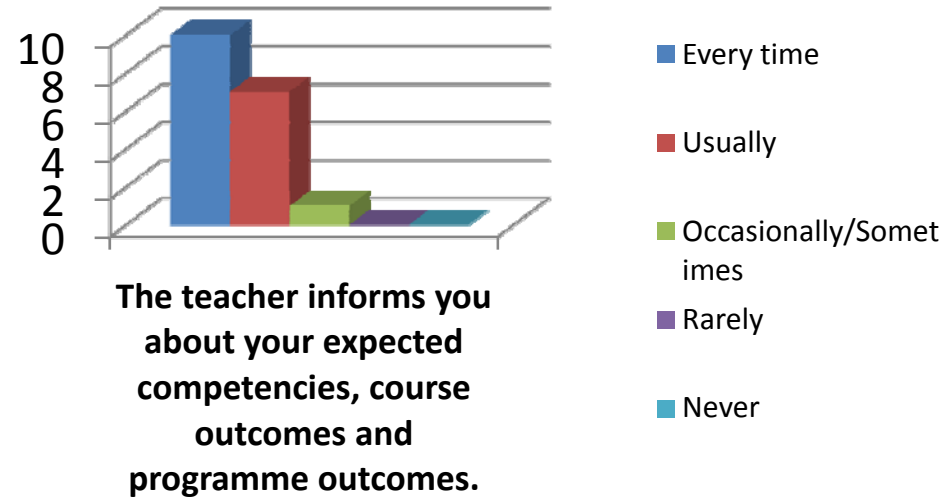
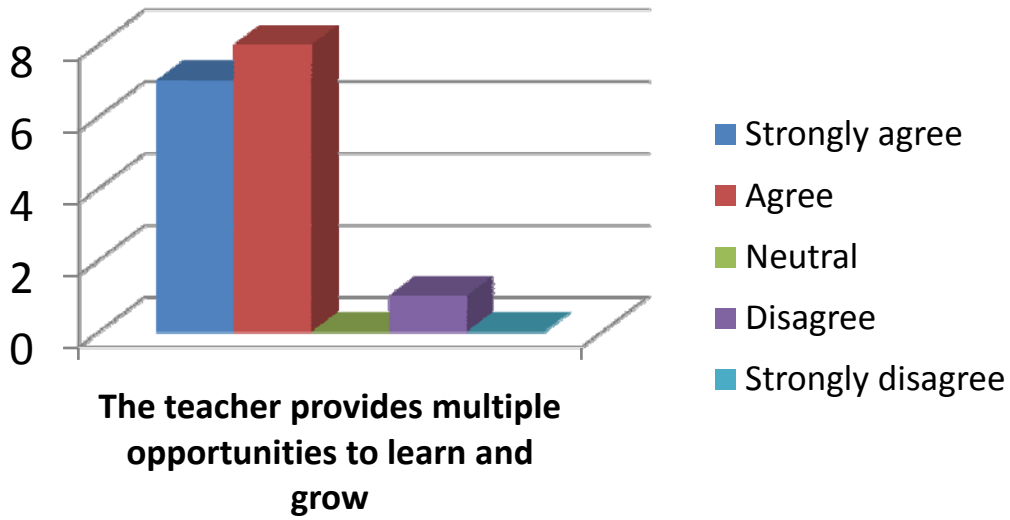
**The teacher takes active interest in arranging field visits for students**

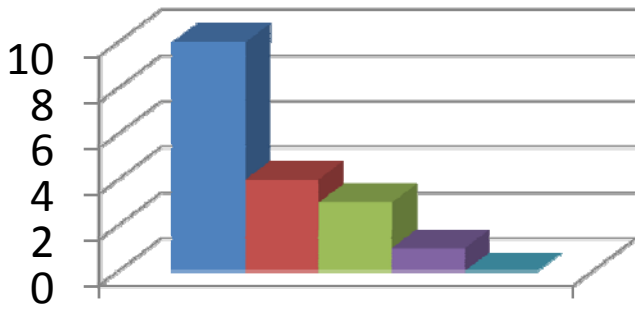
- Regularly
- Often
- Sometimes
- Rarely
- Never



**The teaching process in the classroom facilitates you in cognitive, social and emotional growth.**

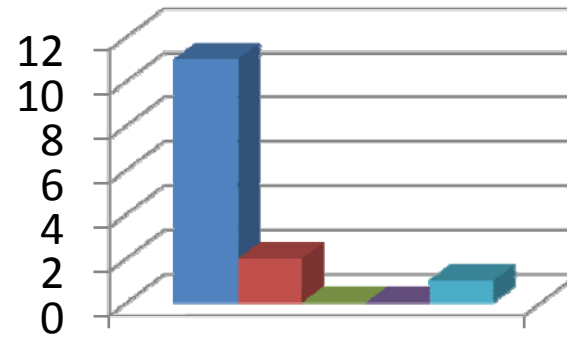
- Significantly
- Very Well
- Moderately
- Marginally
- Not at all





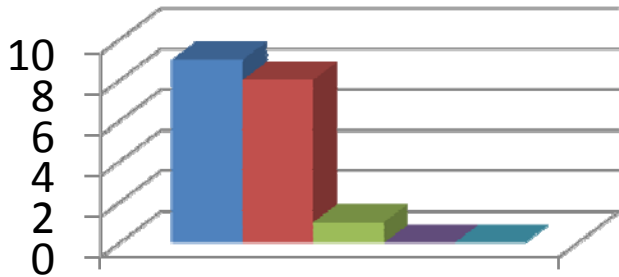
**The teacher identifies your strengths and encourage you with providing right level of challenges.**

- Fully
- Reasonably
- Partially
- Slightly
- Unable to



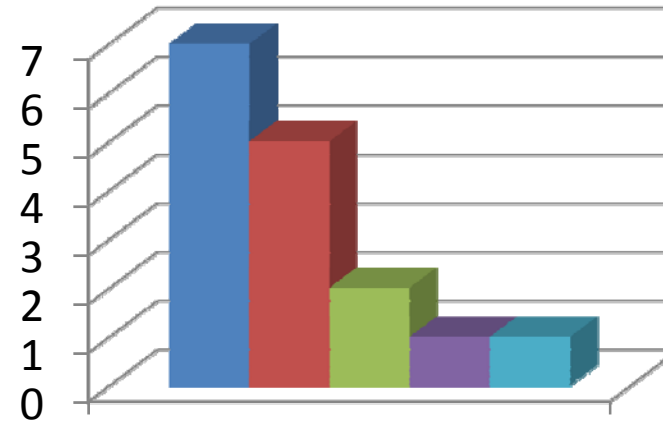
**Teacher is able to identify your weaknesses and help you to overcome them.**

- Every time
- Usually
- Occasionally/Sometimes
- Rarely
- Never



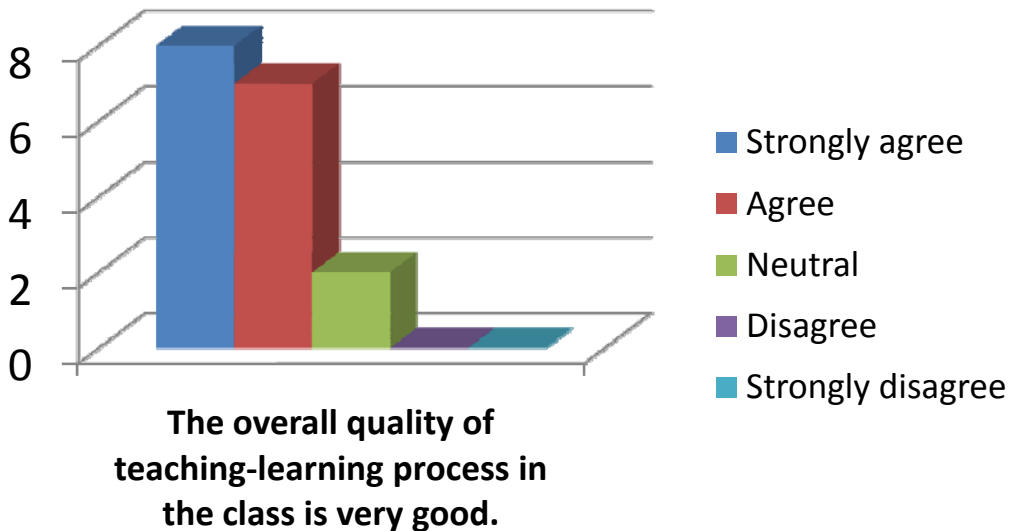
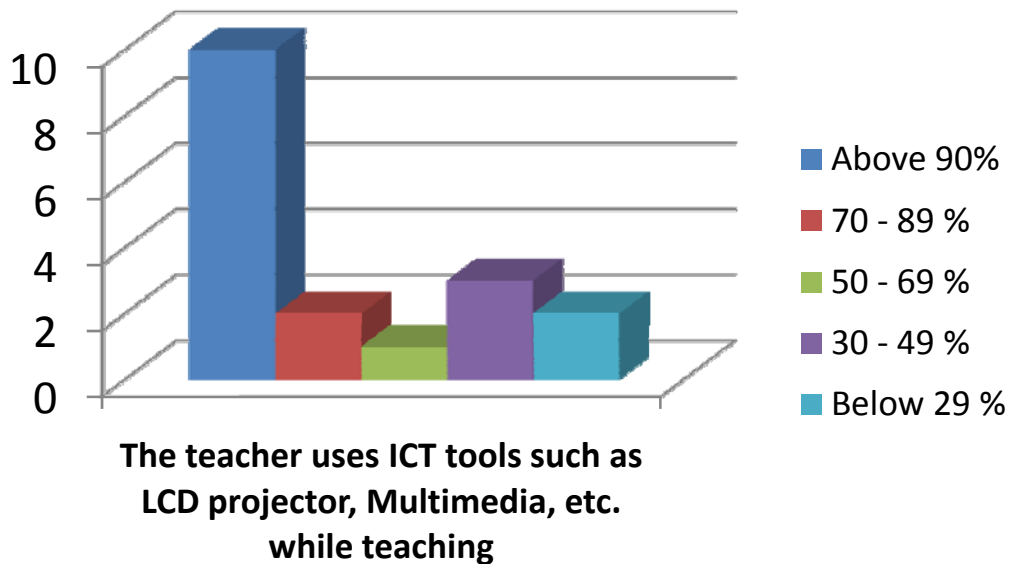
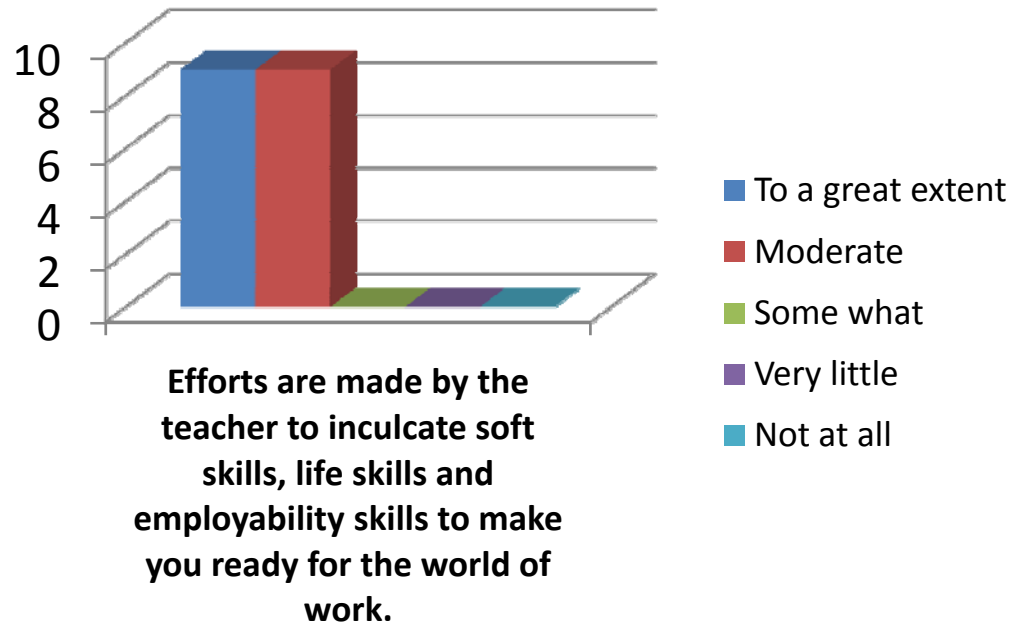
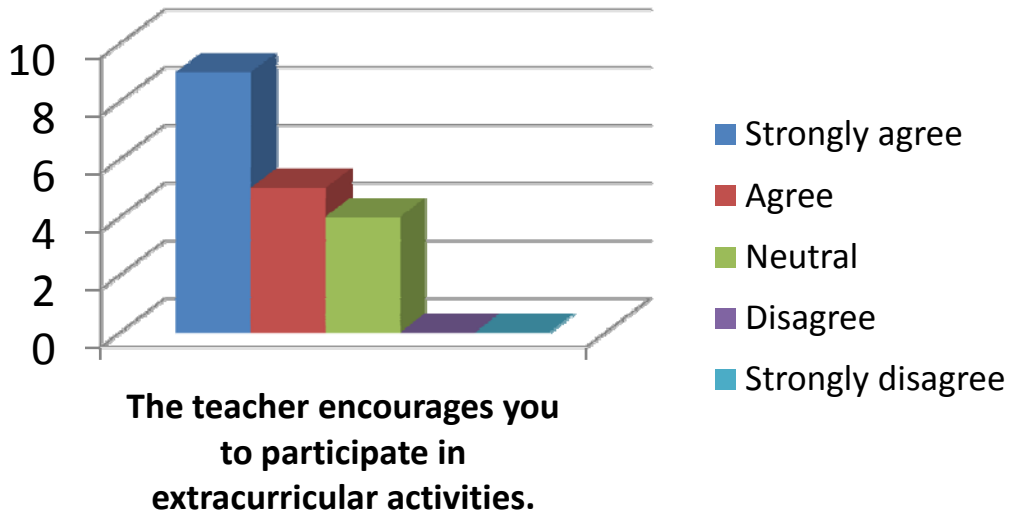
**The teacher makes effort to engage students in the monitoring, review and continuous quality improvement of the teaching learning process.**

- Strongly agree
- Agree
- Neutral
- Disagree
- Strongly disagree

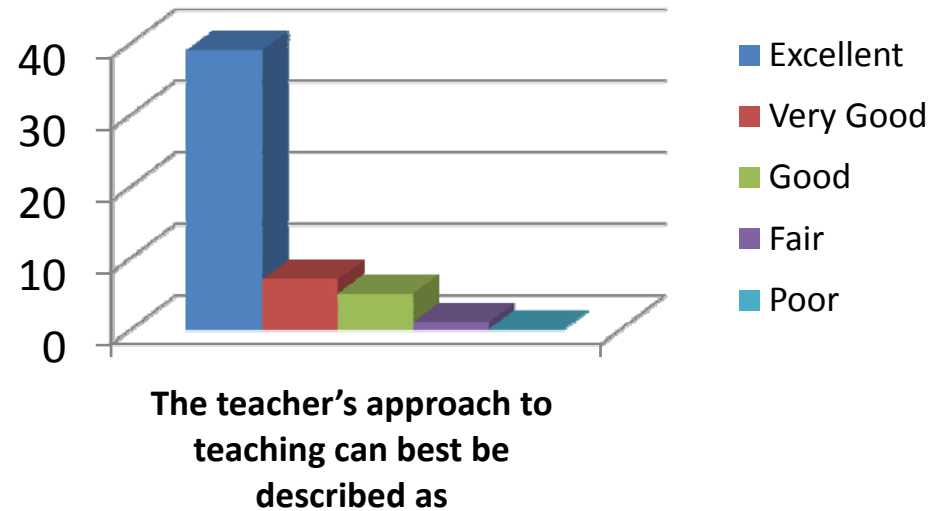
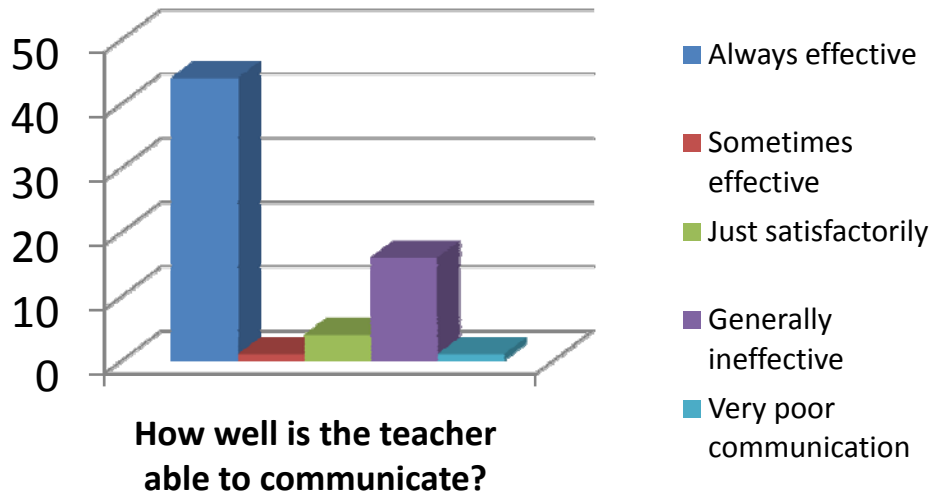
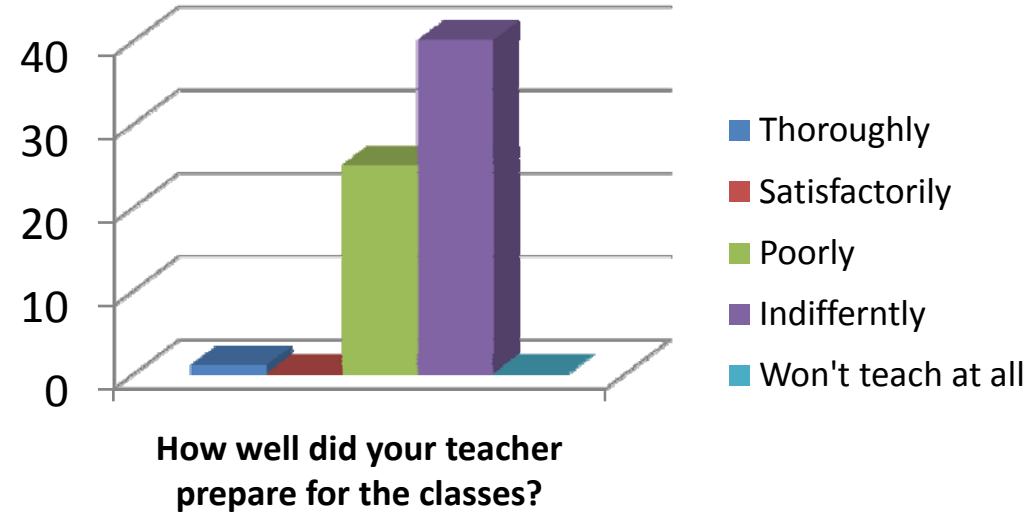
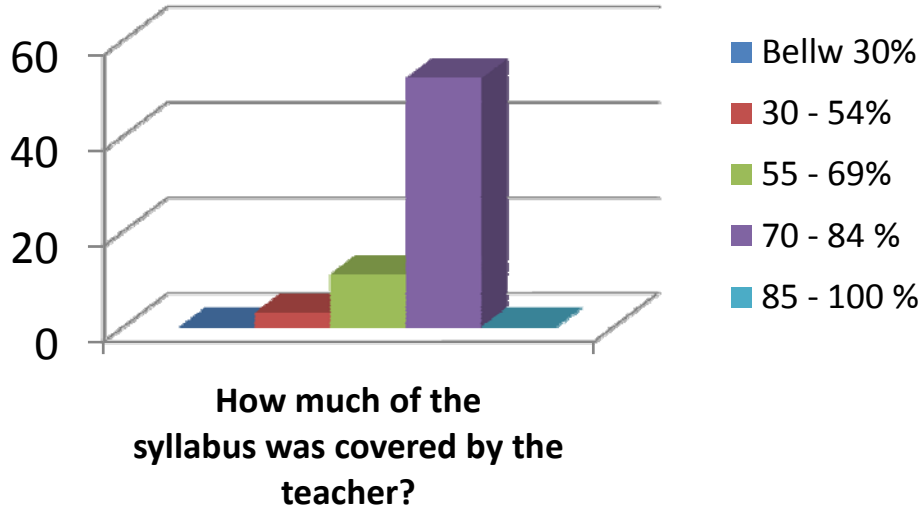


**The teacher uses the student centric methods, such as experiential learning, participative learning and problem solving for enhancing learning experiences.**

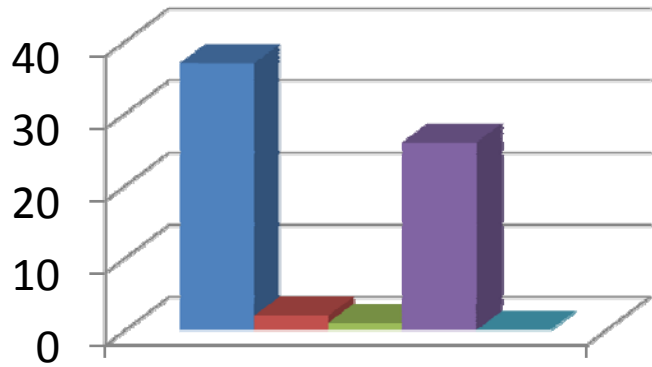
- To a great extent
- Moderate
- Some what
- Very little
- Not at all



# Mrs.D.Lumbini Devi

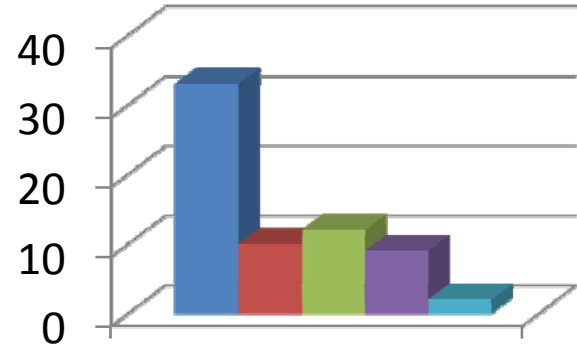






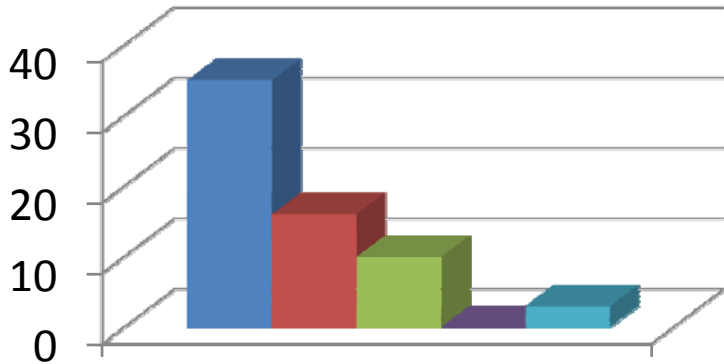
**Fairness of the internal evaluation process by the teacher**

- Always Fair
- Usually Fair
- Sometimes unfair
- Usually unfair
- Unfair



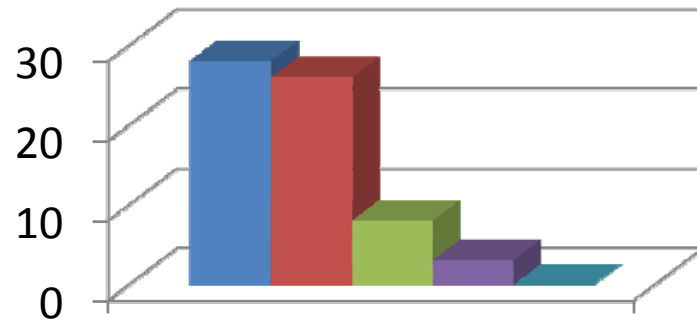
**Was your performance in assignments discussed with you?**

- Evertime
- Usually
- Occasionally/Sometimes
- Rarely
- Never



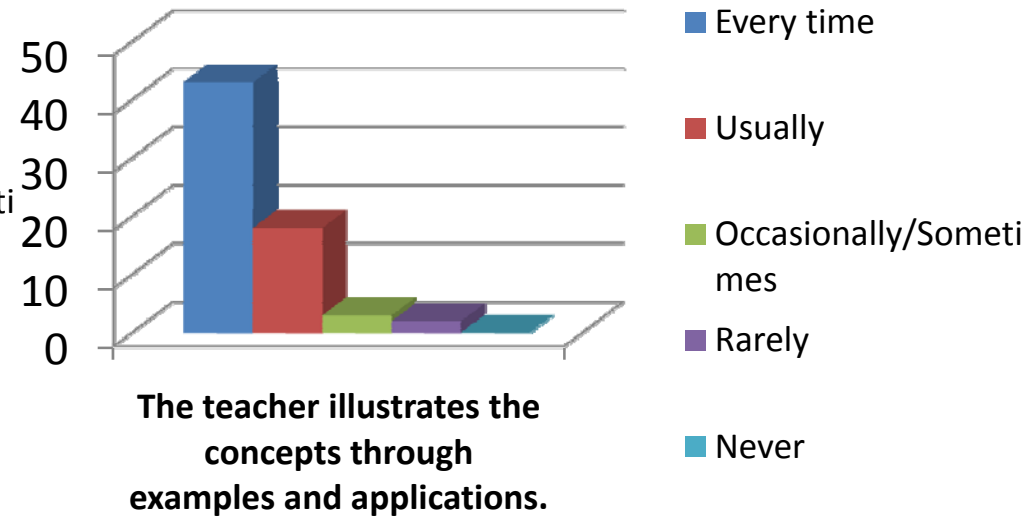
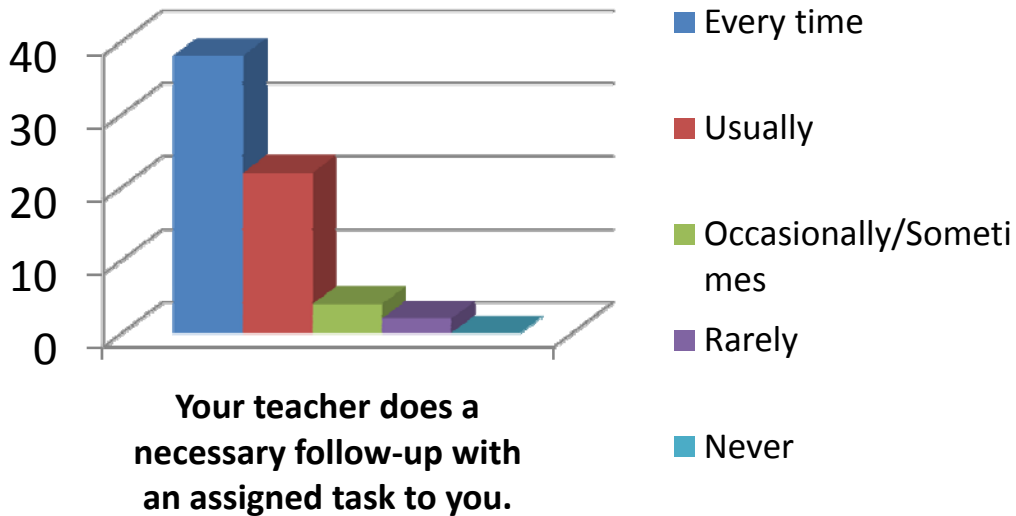
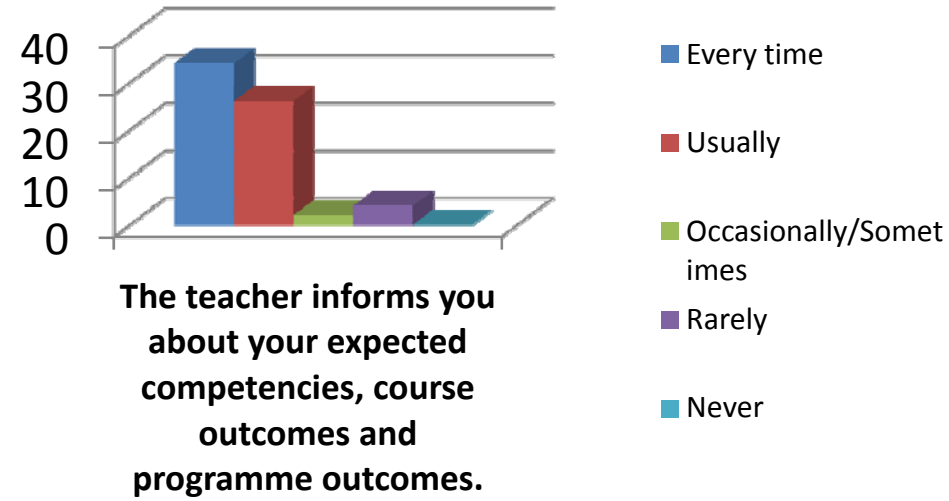
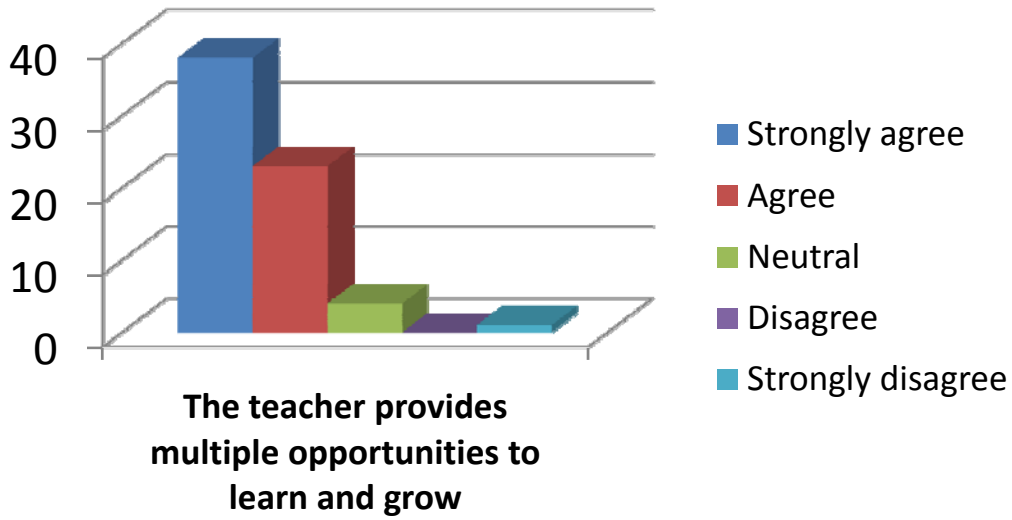
**The teacher takes active interest in arranging field visits for students**

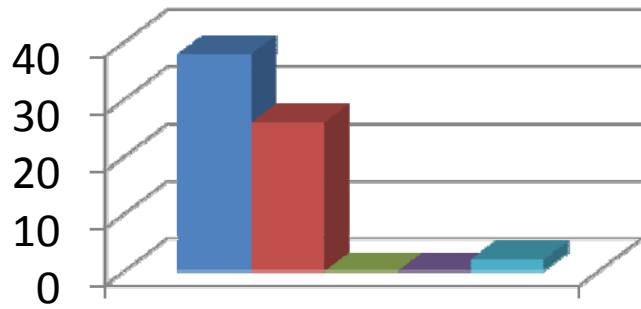
- Regularly
- Often
- Sometimes
- Rarely
- Never



**The teaching process in the classroom facilitates you in cognitive, social and emotional growth.**

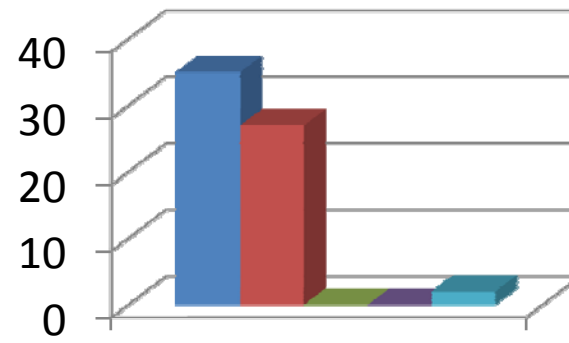
- Significantly
- Very Well
- Moderately
- Marginally
- Not at all





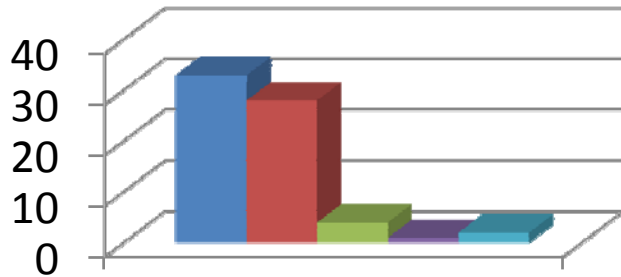
**The teacher identifies your strengths and encourage you with providing right level of challenges.**

- Fully
- Reasonably
- Partially
- Slightly
- Unable to



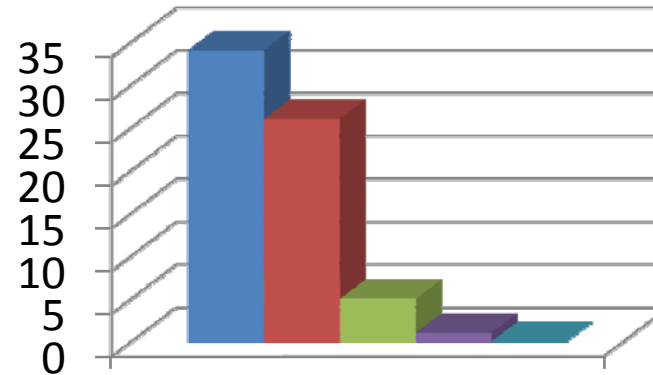
**Teacher is able to identify your weaknesses and help you to overcome them.**

- Every time
- Usually
- Occasionally/Sometimes
- Rarely
- Never



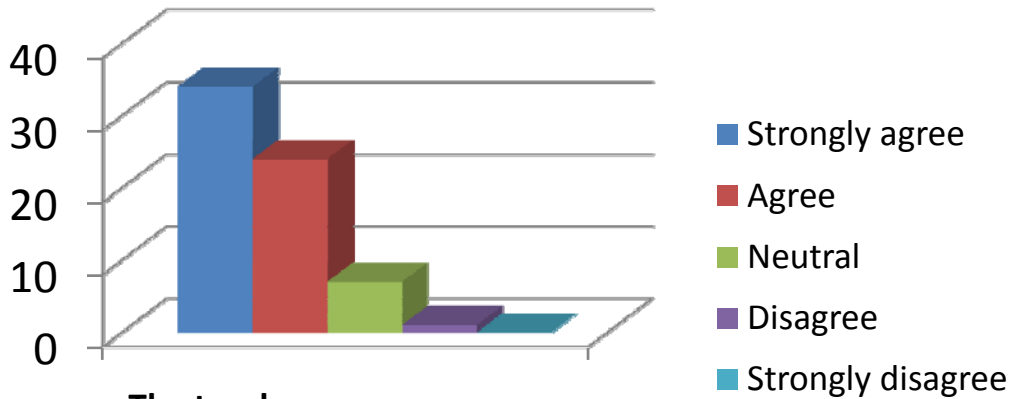
**The teacher makes effort to engage students in the monitoring, review and continuous quality improvement of the teaching learning process.**

- Strongly agree
- Agree
- Neutral
- Disagree
- Strongly disagree

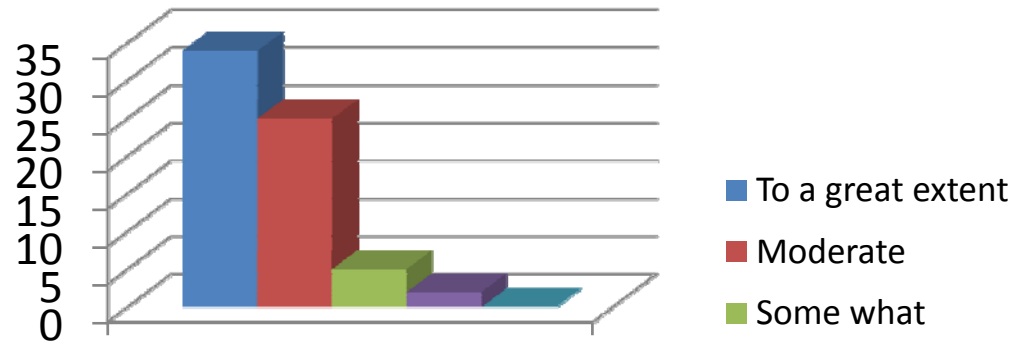


**The teacher uses the student centric methods, such as experiential learning, participative learning and problem solving for enhancing learning experiences.**

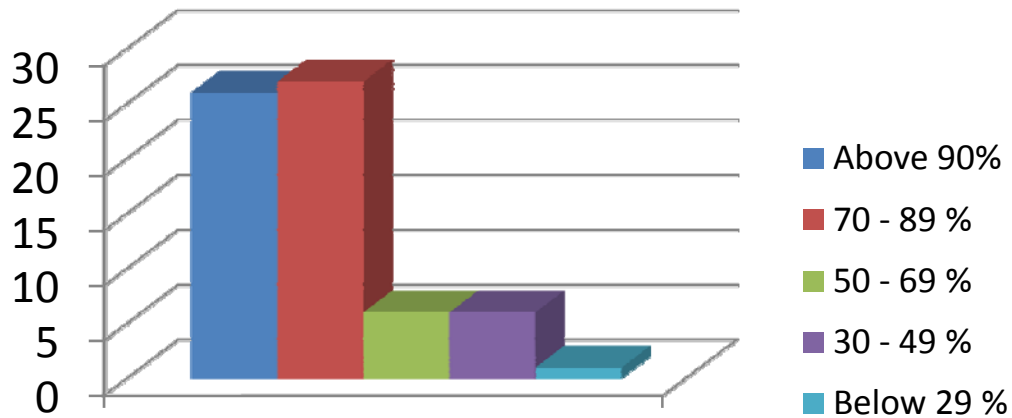
- To a great extent
- Moderate
- Some what
- Very little
- Not at all



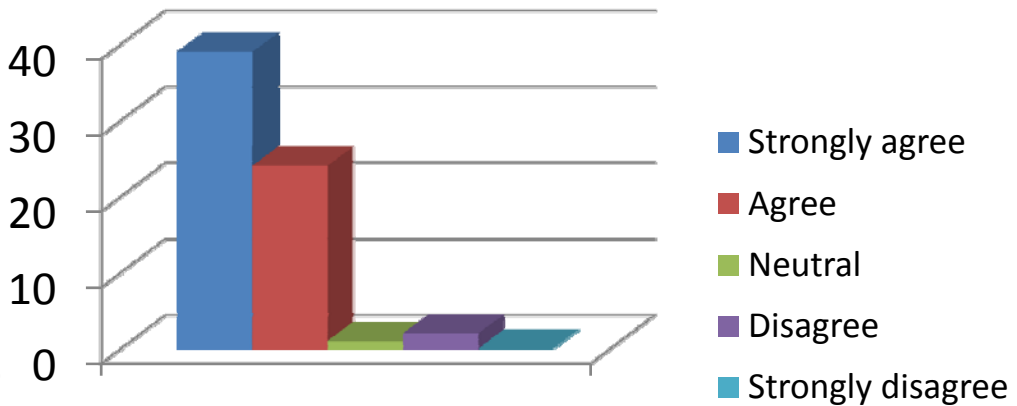
**The teacher encourages you to participate in extracurricular activities.**



**Efforts are made by the teacher to inculcate soft skills, life skills and employability skills to make you ready for the world of work.**

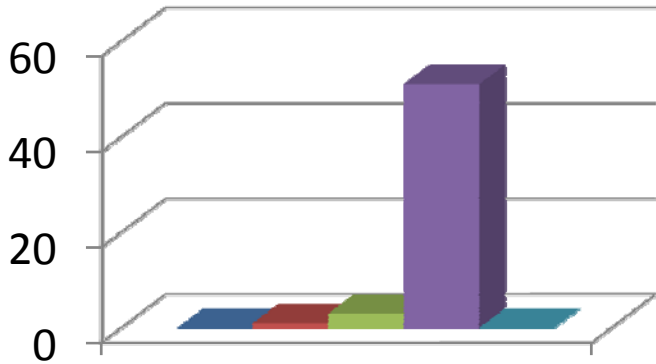


**The teacher uses ICT tools such as LCD projector, Multimedia, etc. while teaching**



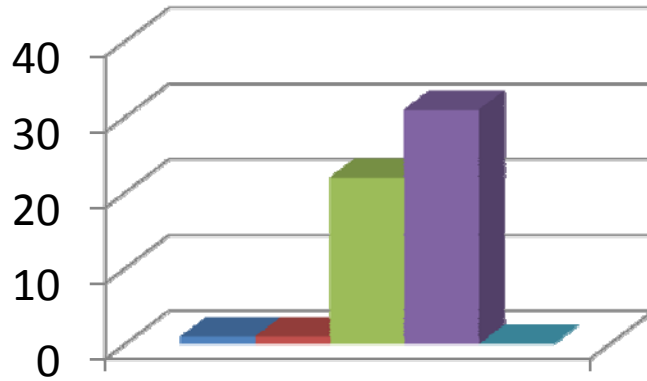
**The overall quality of teaching-learning process in the class is very good.**

# Ms.R.Ripsee



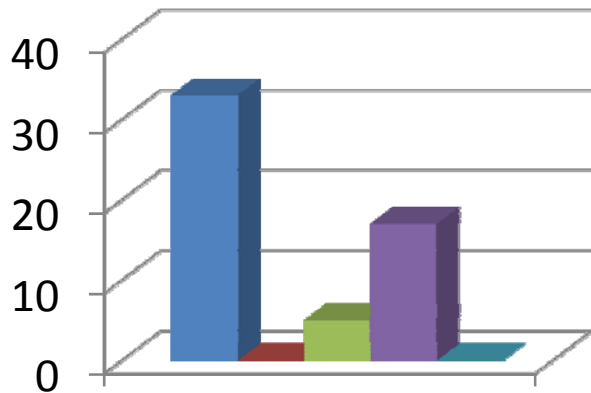
How much of the syllabus was covered by the teacher?

- Below 30%
- 30 - 54%
- 55 - 69%
- 70 - 84%
- 85 - 100%



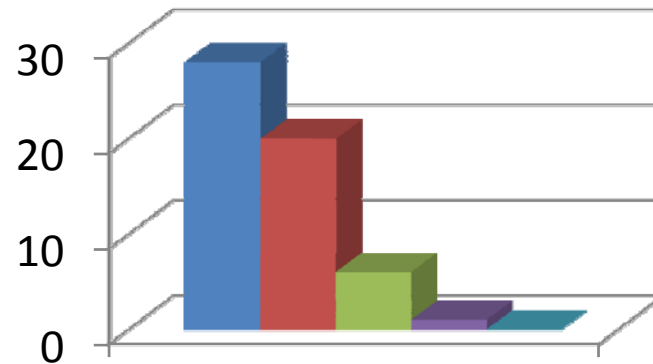
How well did your teacher prepare for the classes?

- Thoroughly
- Satisfactorily
- Poorly
- Indifferently
- Won't teach at all



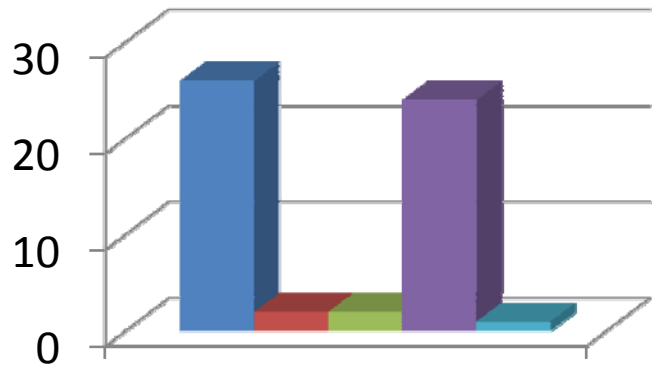
How well is the teacher able to communicate?

- Always effective
- Sometimes effective
- Just satisfactorily
- Generally ineffective
- Very poor communication



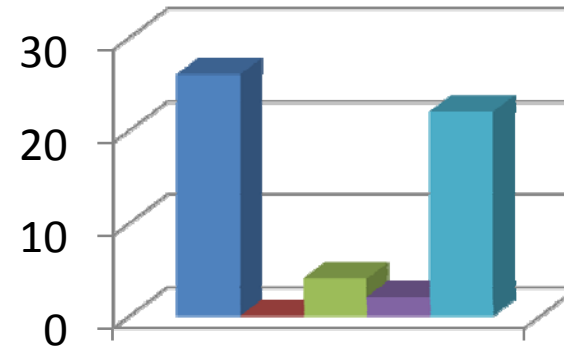
The teacher's approach to teaching can best be described as

- Excellent
- Very Good
- Good
- Fair
- Poor



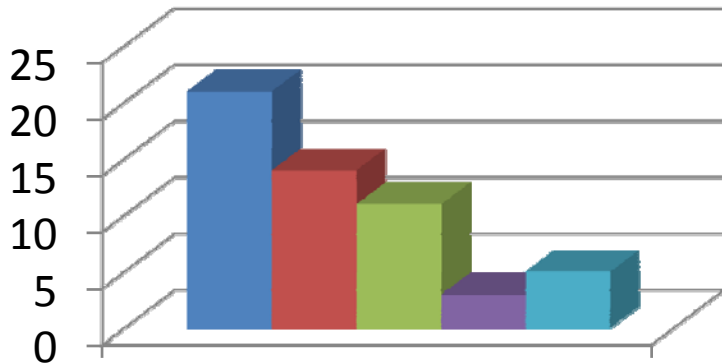
**Fairness of the internal evaluation process by the teacher**

- Always Fair
- Usually Fair
- Sometimes unfair
- Usually unfair
- Unfair



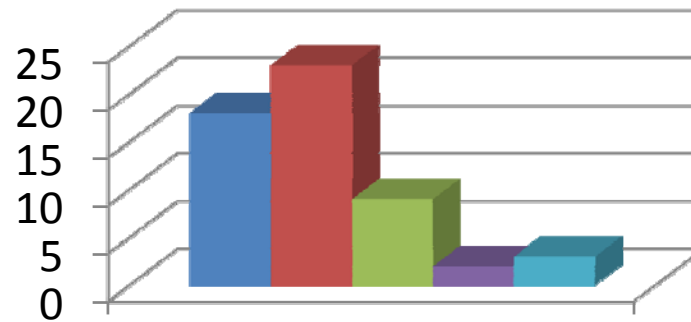
**Was your performance in assignments discussed with you?**

- Evertime
- Usually
- Occasionally/Sometimes
- Rarely
- Never



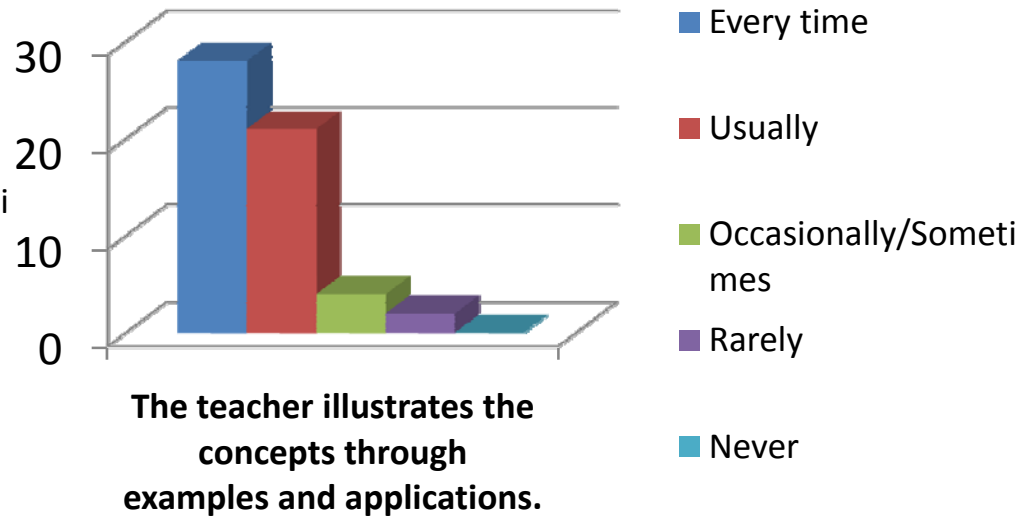
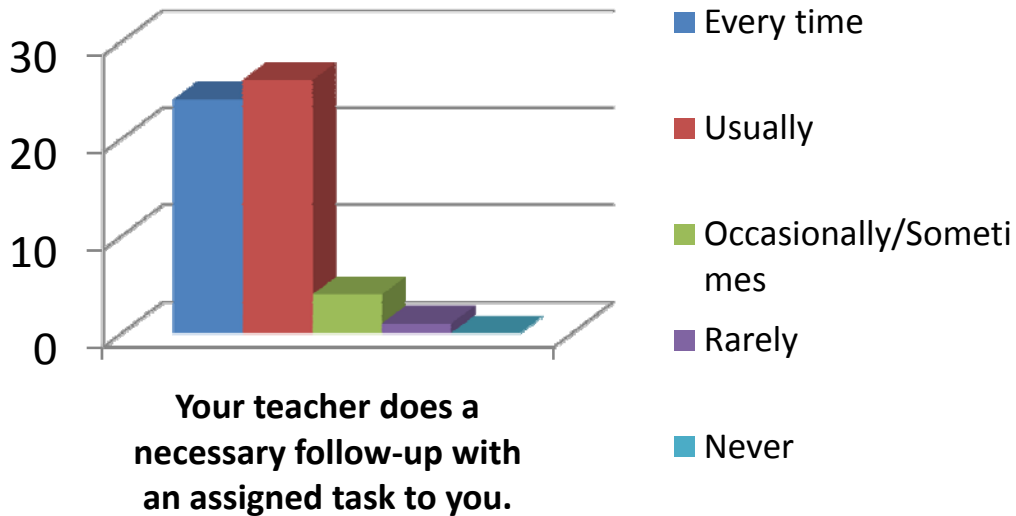
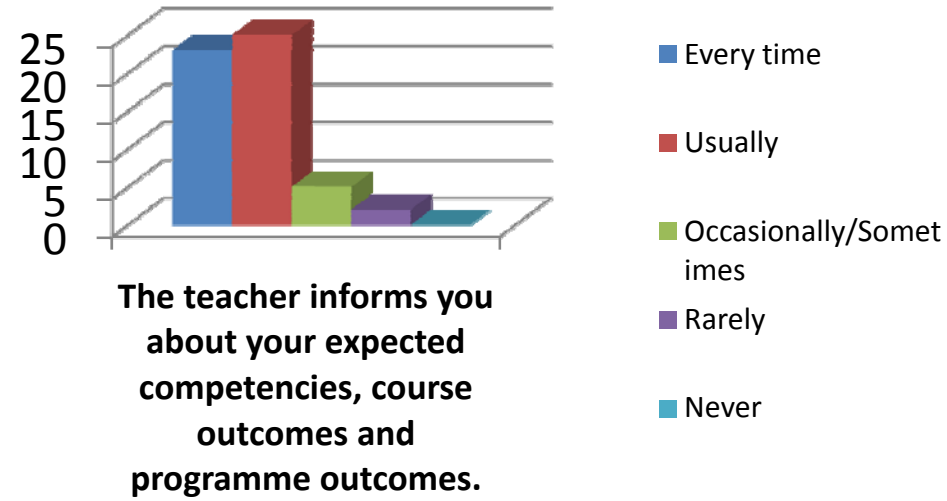
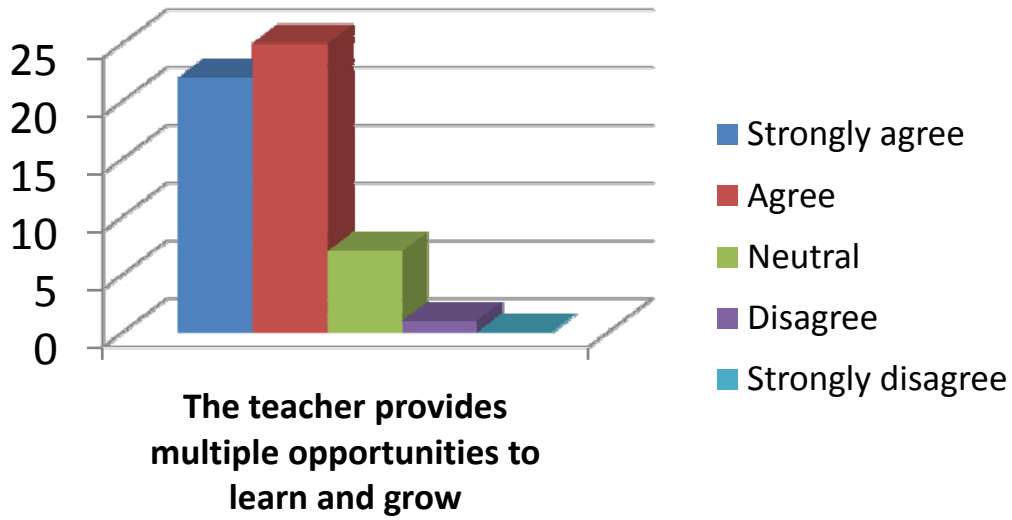
**The teacher takes active interest in arranging field visits for students**

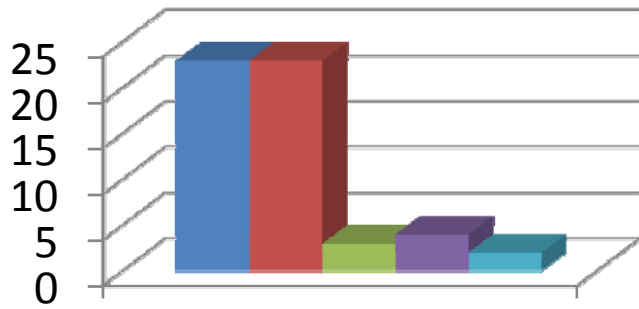
- Regularly
- Often
- Sometimes
- Rarely
- Never



**The teaching process in the classroom facilitates you in cognitive, social and emotional growth.**

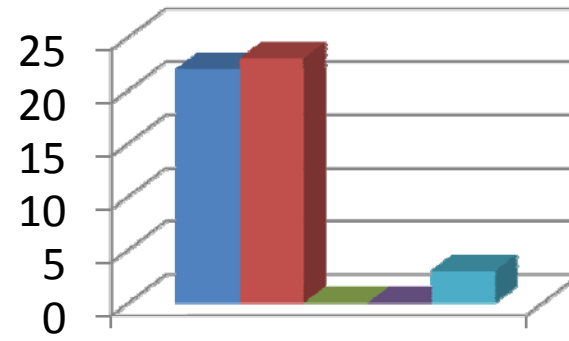
- Significantly
- Very Well
- Moderately
- Marginally
- Not at all





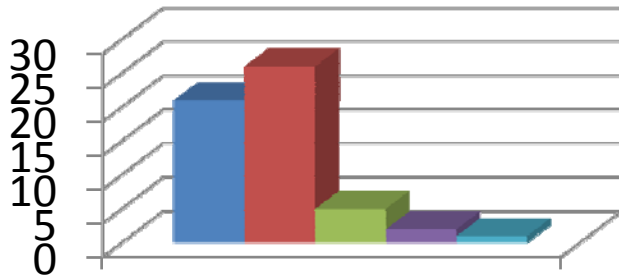
**The teacher identifies your strengths and encourage you with providing right level of challenges.**

- Fully
- Reasonably
- Partially
- Slightly
- Unable to



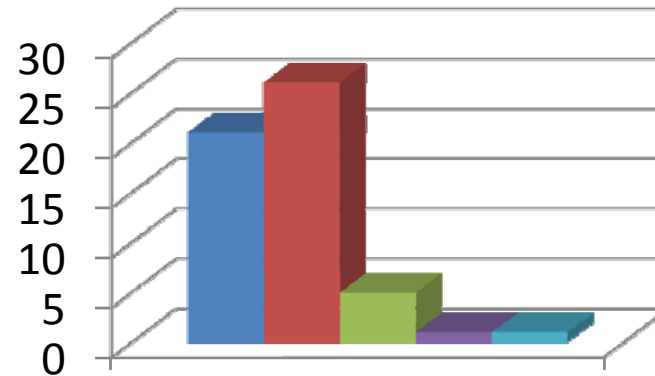
**Teacher is able to identify your weaknesses and help you to overcome them.**

- Every time
- Usually
- Occasionally/Sometimes
- Rarely
- Never



**The teacher makes effort to engage students in the monitoring, review and continuous quality improvement of the teaching learning process.**

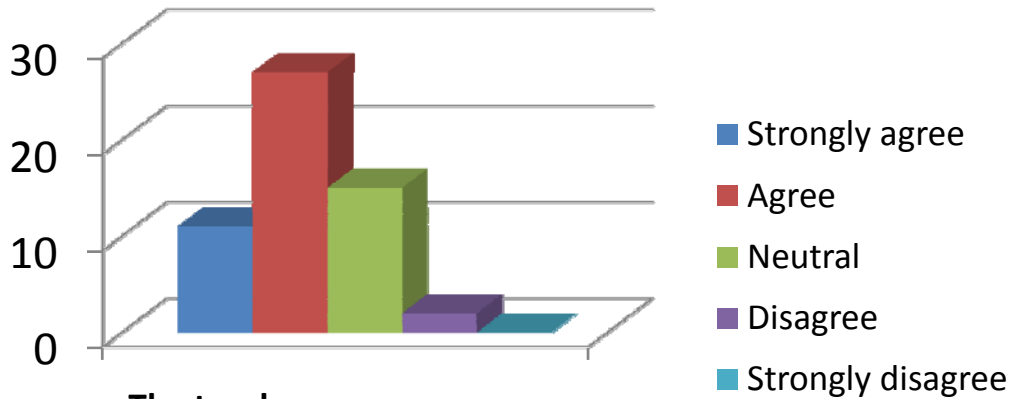
- Strongly agree
- Agree
- Neutral
- Disagree
- Strongly disagree



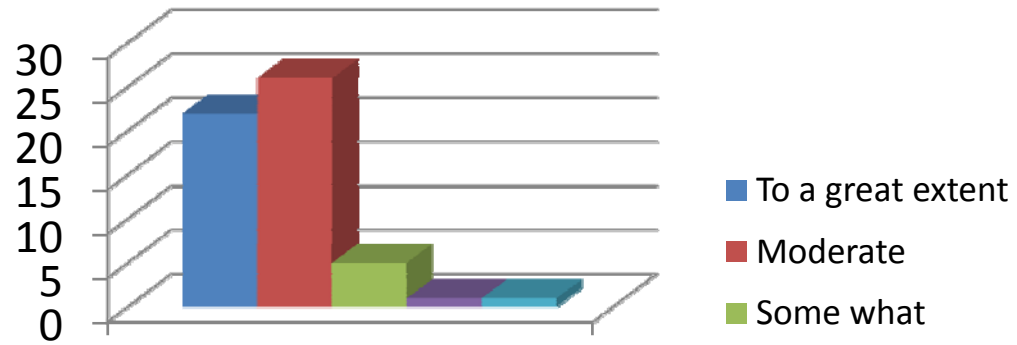
**The teacher uses the student centric methods, such as experiential learning, participative learning and problem solving for enhancing learning experiences.**

- To a great extent
- Moderate
- Some what
- Very little
- Not at all

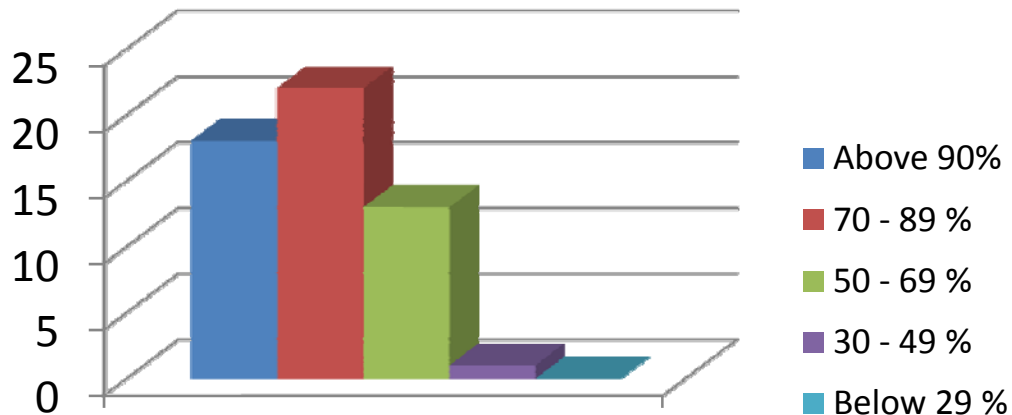




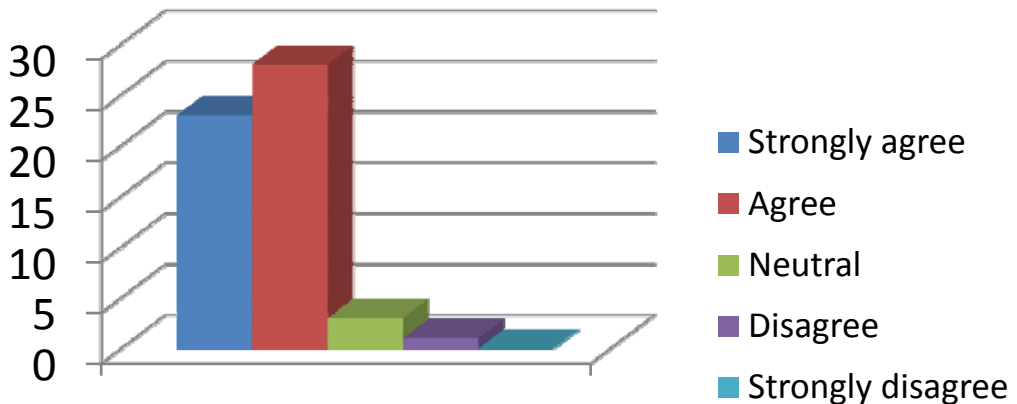
**The teacher encourages you to participate in extracurricular activities.**



**Efforts are made by the teacher to inculcate soft skills, life skills and employability skills to make you ready for the world of work.**

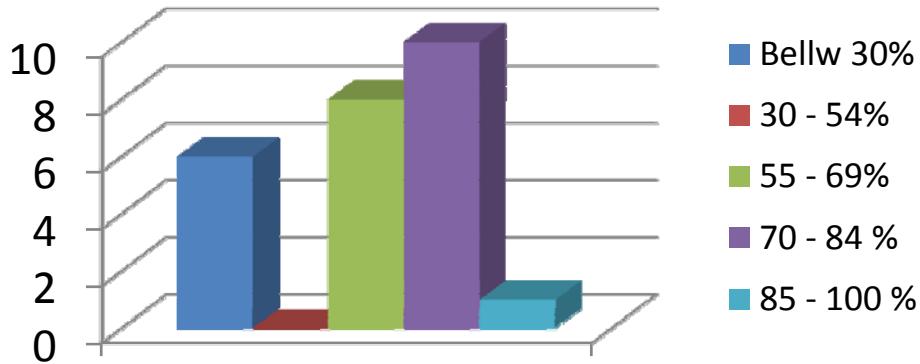


**The teacher uses ICT tools such as LCD projector, Multimedia, etc. while teaching**

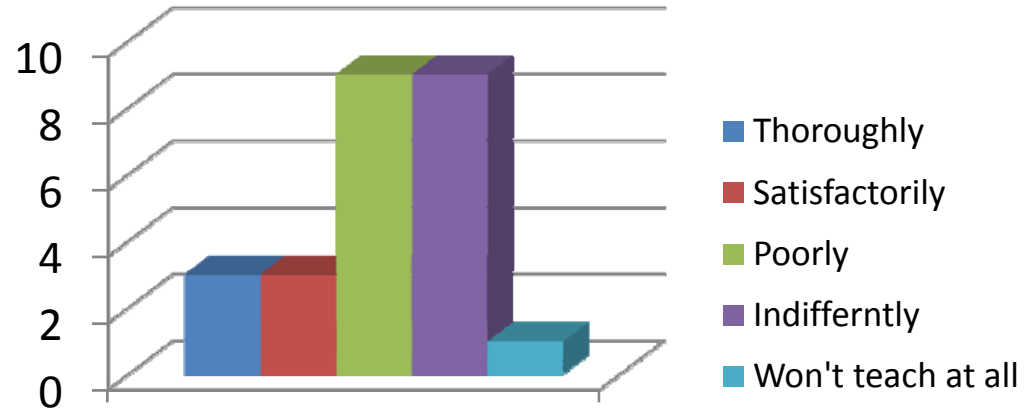


**The overall quality of teaching-learning process in the class is very good.**

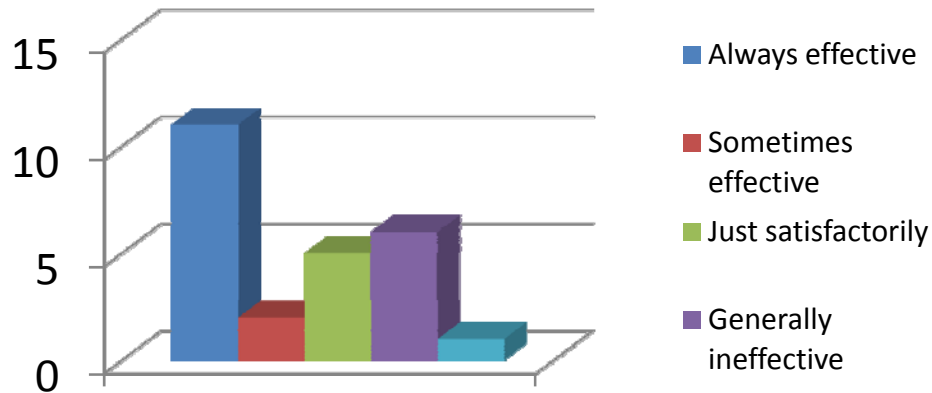
# Ms.V.Vijaya Kala



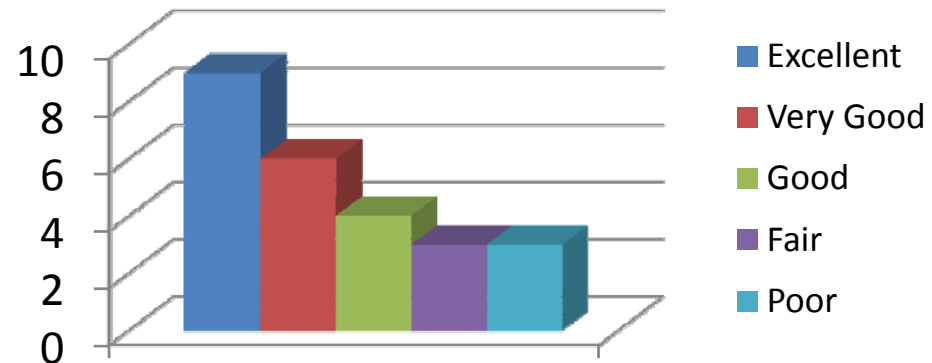
**How much of the syllabus was covered by the teacher?**



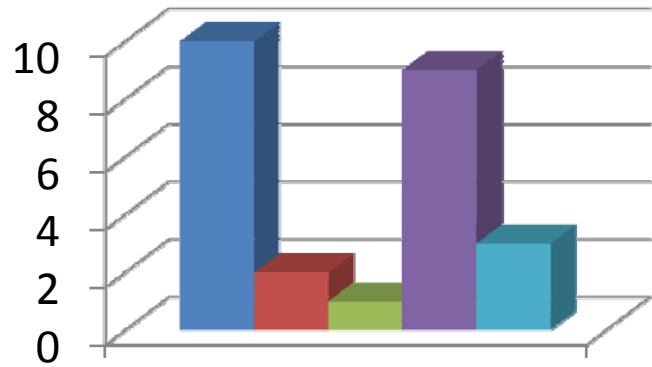
**How well did your teacher prepare for the classes?**



**How well is the teacher able to communicate?**

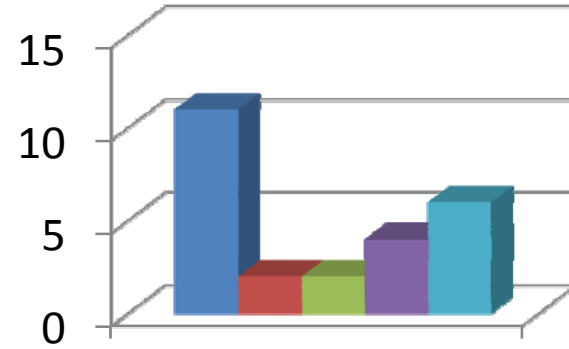


**The teacher's approach to teaching can best be described as**



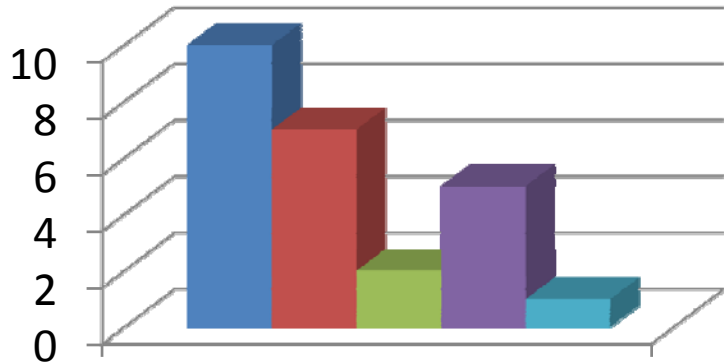
**Fairness of the internal evaluation process by the teacher**

- Always Fair
- Usually Fair
- Sometimes unfair
- Usually unfair
- Unfair



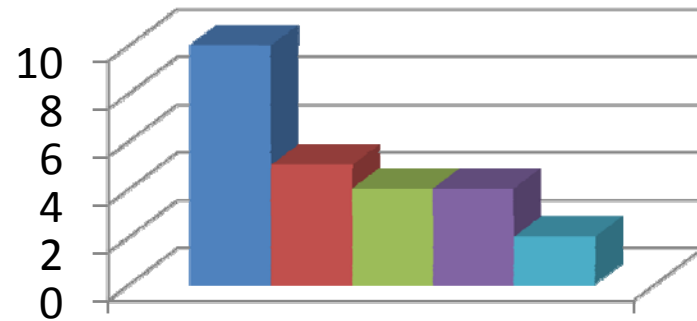
**Was your performance in assignments discussed with you?**

- Everytime
- Usually
- Occasionally/Sometimes
- Rarely
- Never



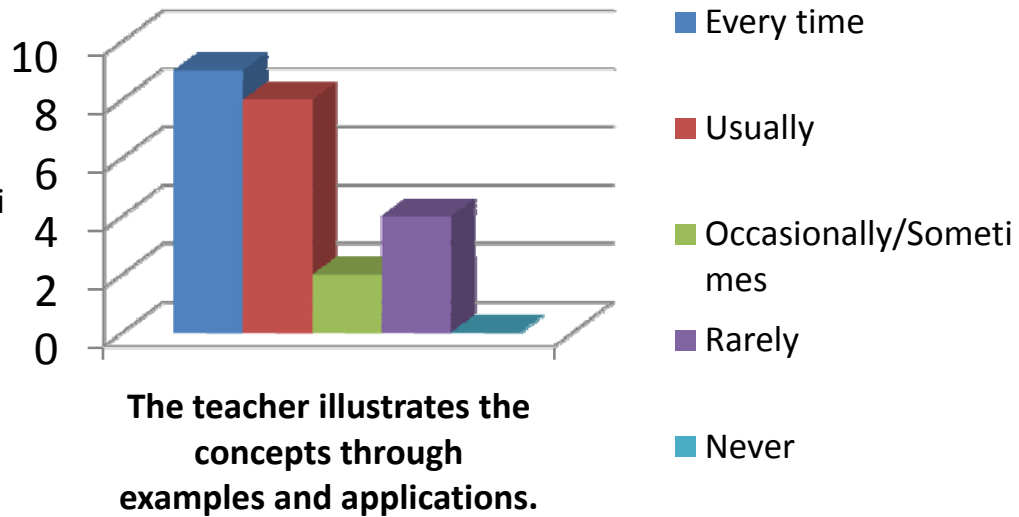
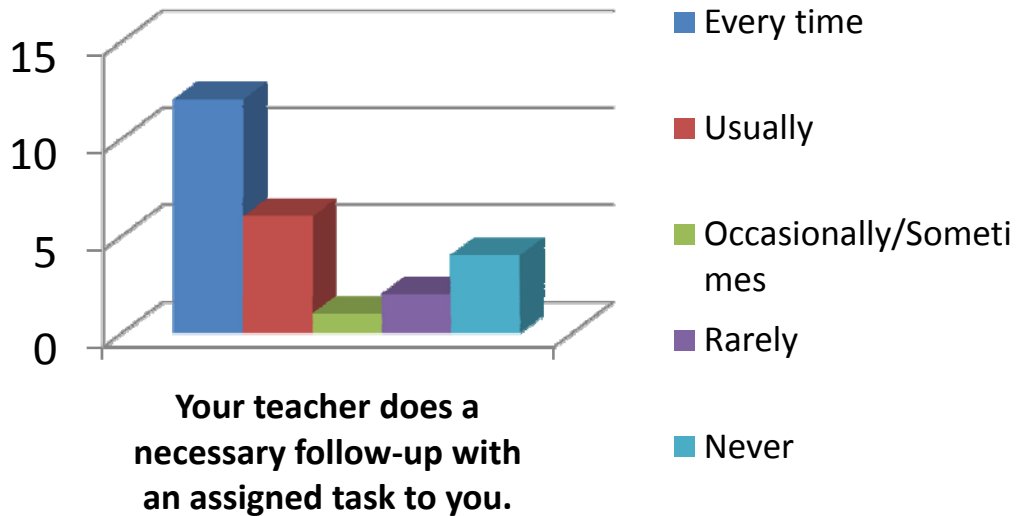
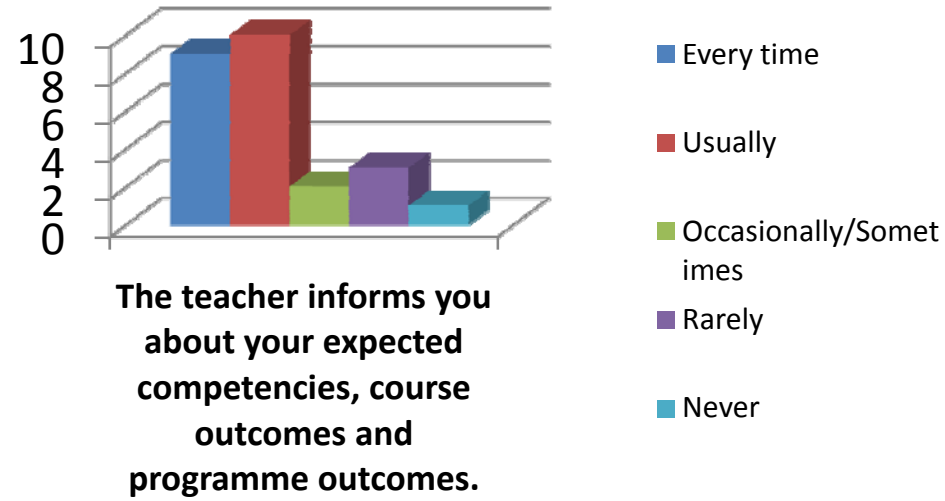
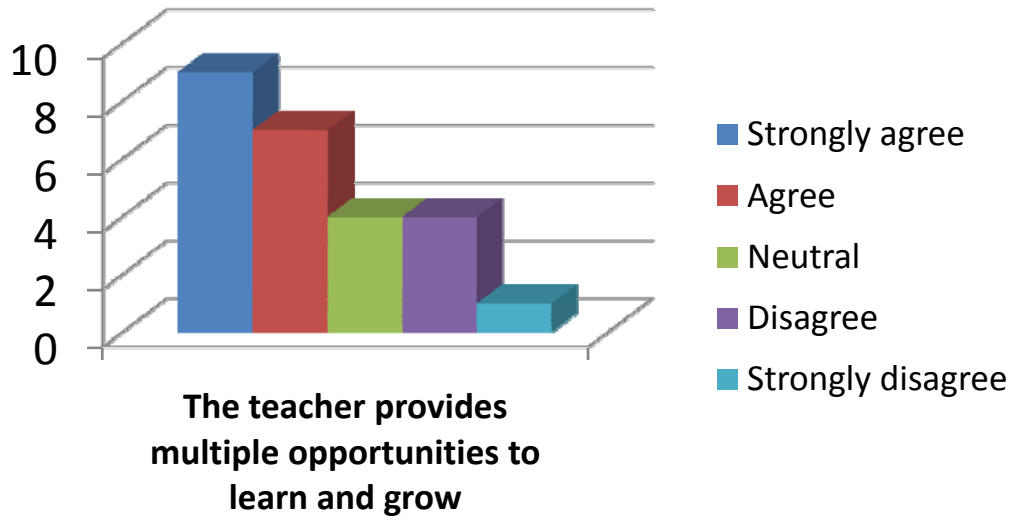
**The teacher takes active interest in arranging field visits for students**

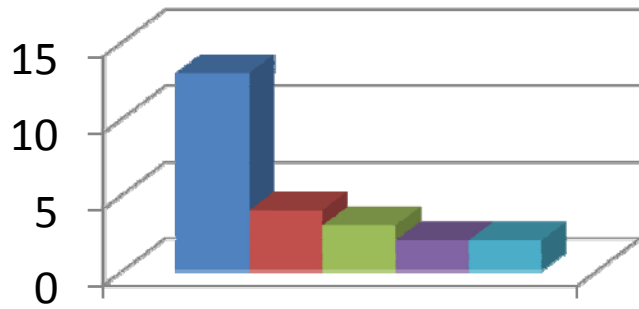
- Regularly
- Often
- Sometimes
- Rarely
- Never



**The teaching process in the classroom facilitates you in cognitive, social and emotional growth.**

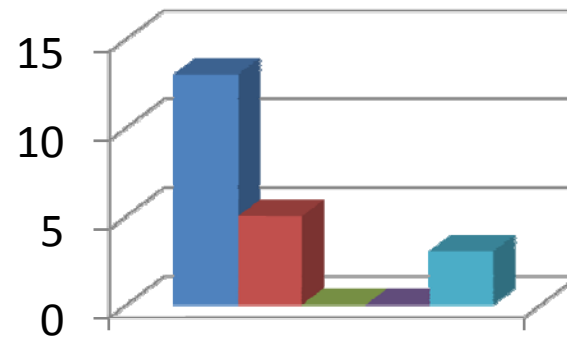
- Significantly
- Very Well
- Moderately
- Marginally
- Not at all





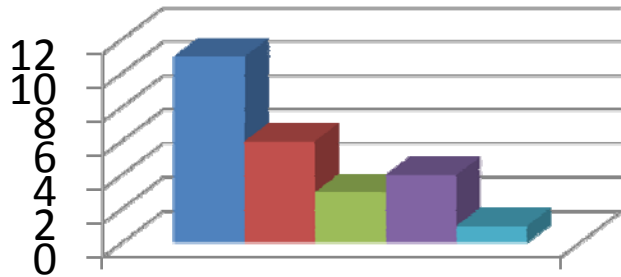
**The teacher identifies your strengths and encourage you with providing right level of challenges.**

- Fully
- Reasonably
- Partially
- Slightly
- Unable to



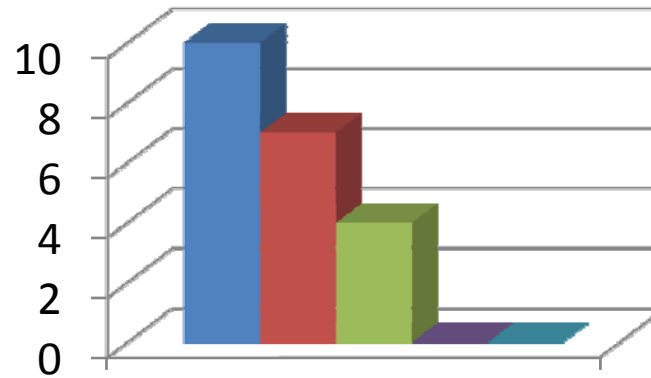
**Teacher is able to identify your weaknesses and help you to overcome them.**

- Every time
- Usually
- Occasionally/Sometimes
- Rarely
- Never



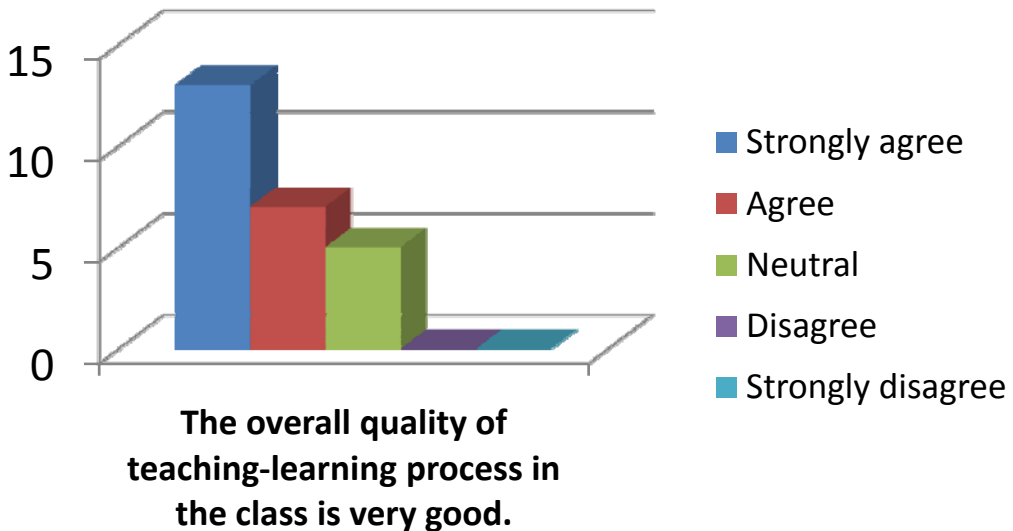
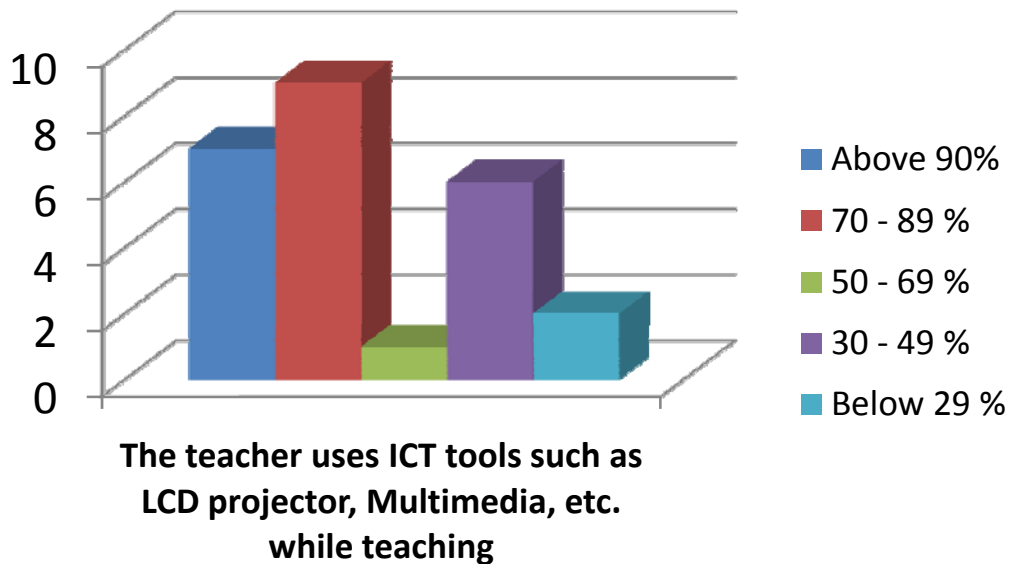
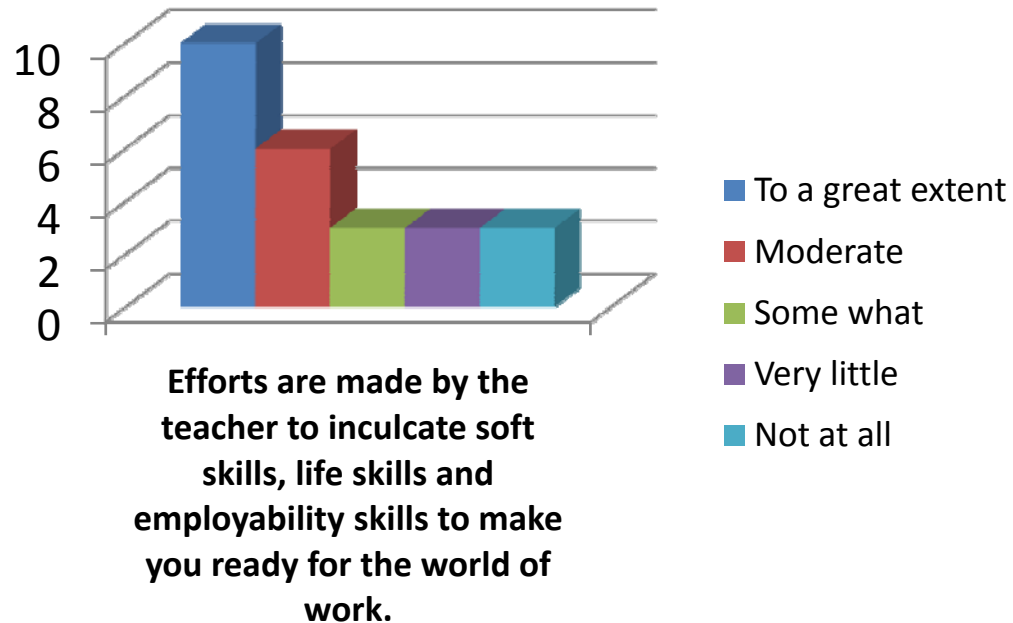
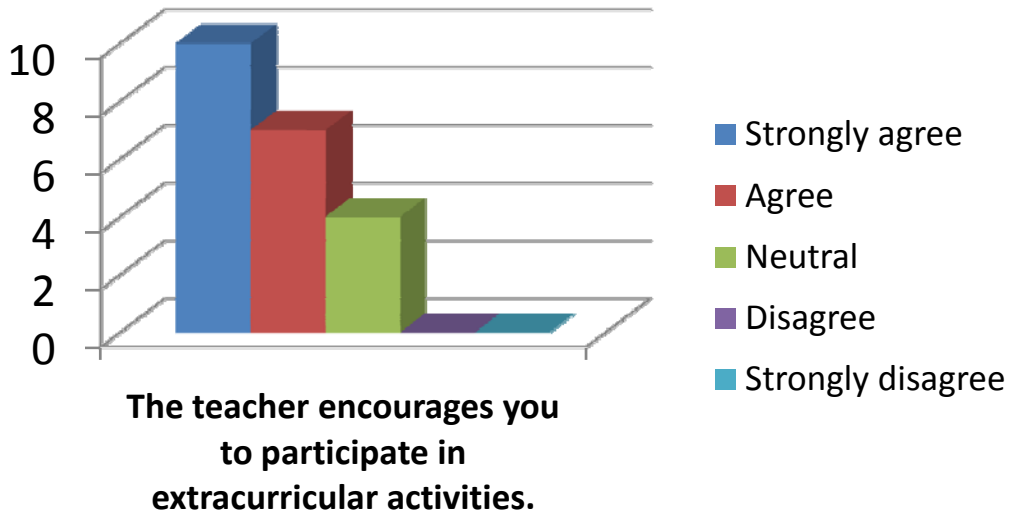
**The teacher makes effort to engage students in the monitoring, review and continuous quality improvement of the teaching learning process.**

- Strongly agree
- Agree
- Neutral
- Disagree
- Strongly disagree

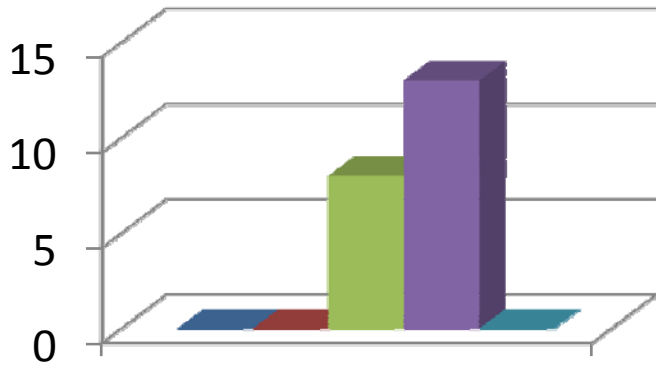


**The teacher uses the student centric methods, such as experiential learning, participative learning and problem solving for enhancing learning experiences.**

- To a great extent
- Moderate
- Some what
- Very little
- Not at all

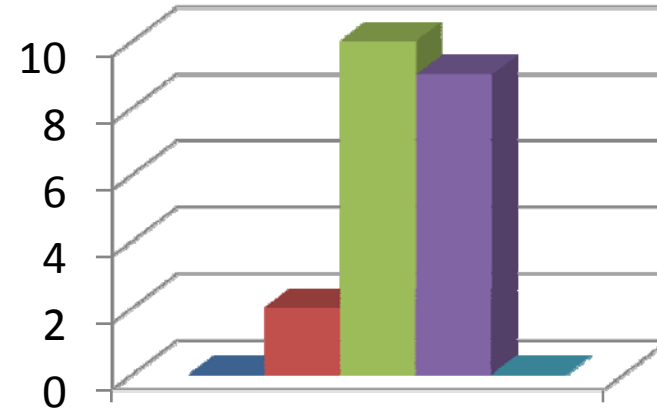


# Mrs.B.Lakshmi Sudha



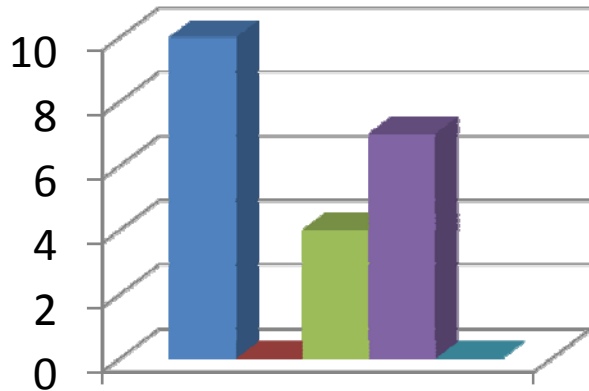
How much of the syllabus was covered by the teacher?

- Bellw 30%
- 30 - 54%
- 55 - 69%
- 70 - 84%
- 85 - 100%



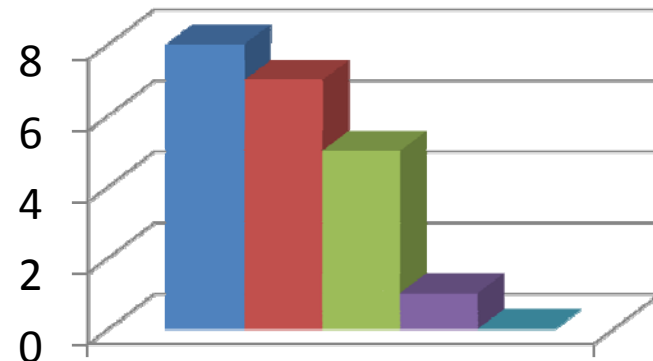
How well did your teacher prepare for the classes?

- Thoroughly
- Satisfactorily
- Poorly
- Indifferently
- Won't teach at all



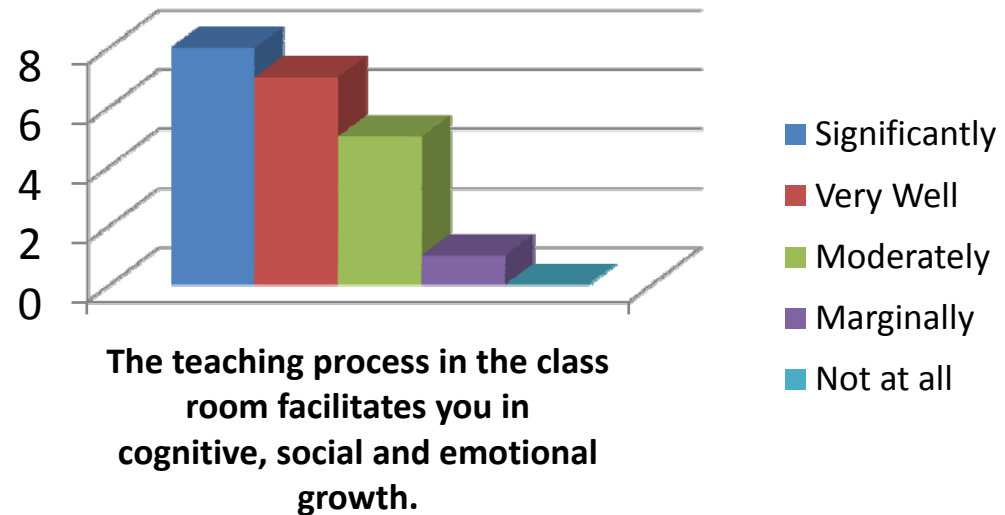
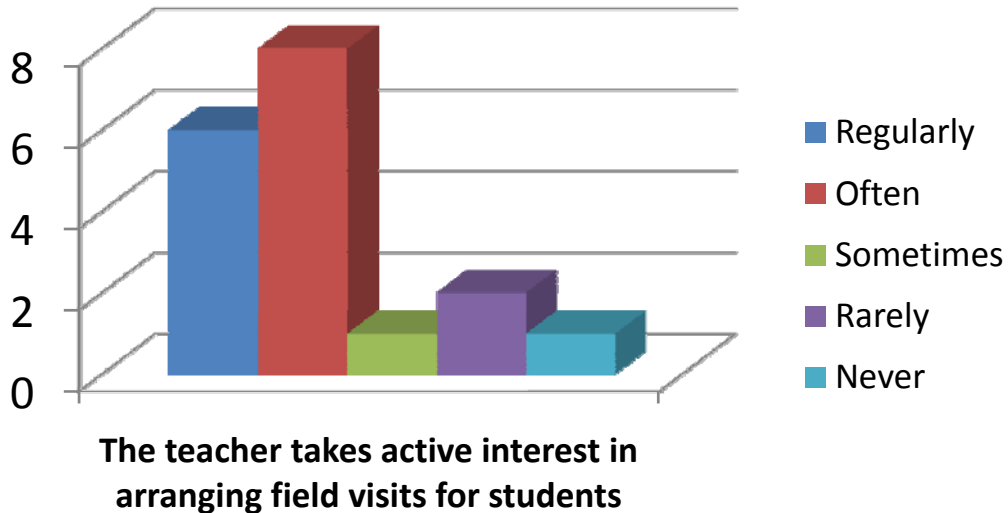
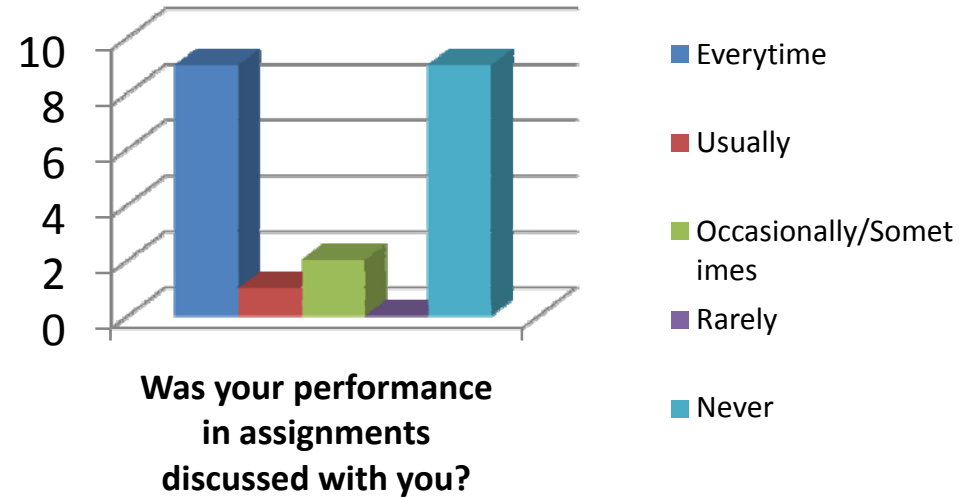
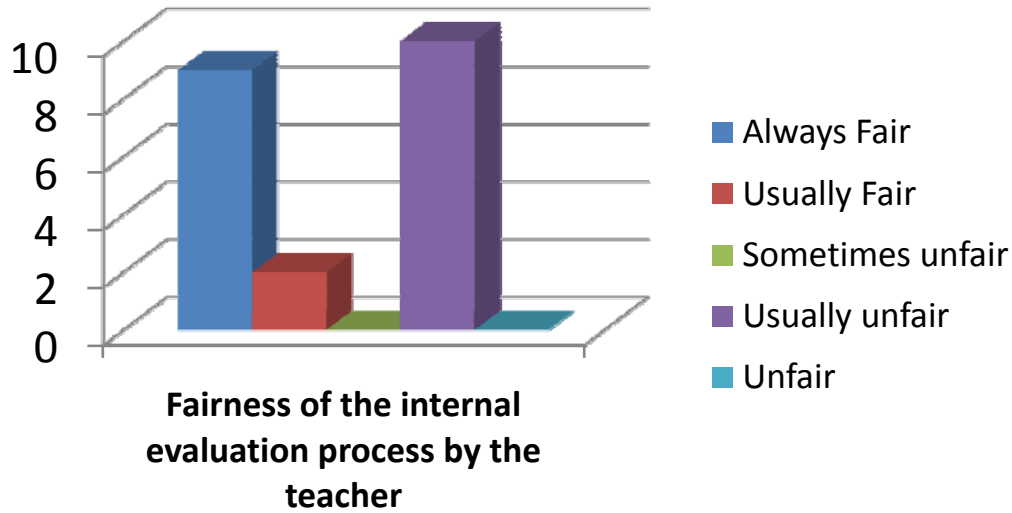
How well is the teacher able to communicate?

- Always effective
- Sometimes effective
- Just satisfactorily
- Generally ineffective
- Very poor communication

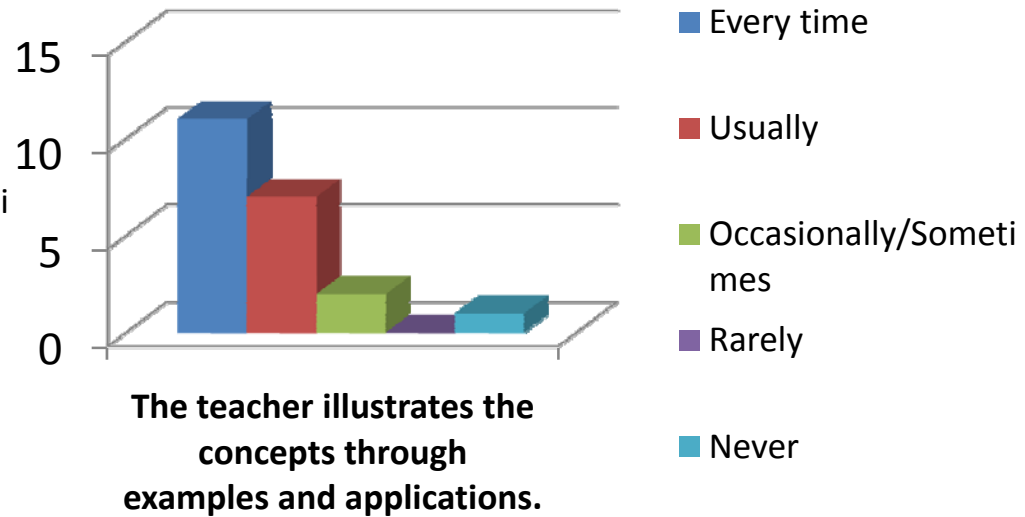
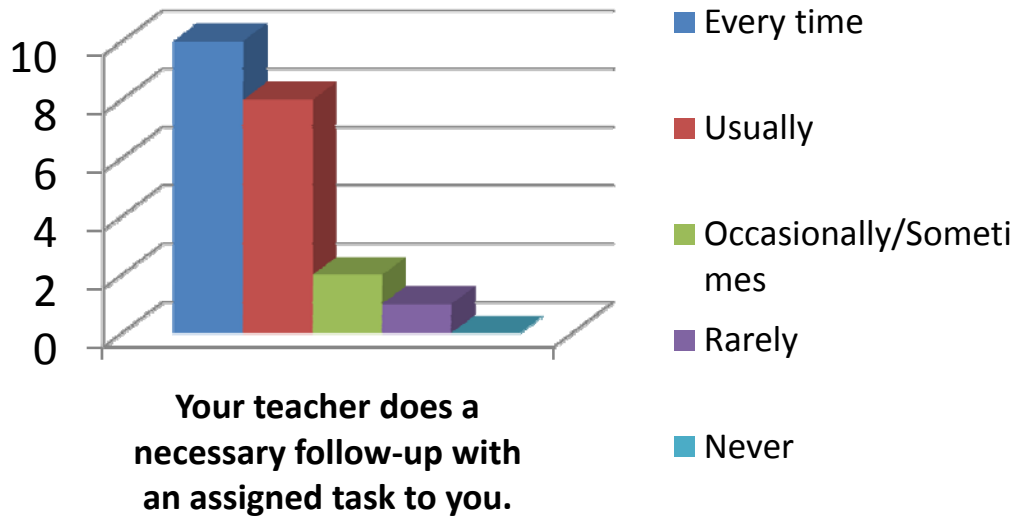
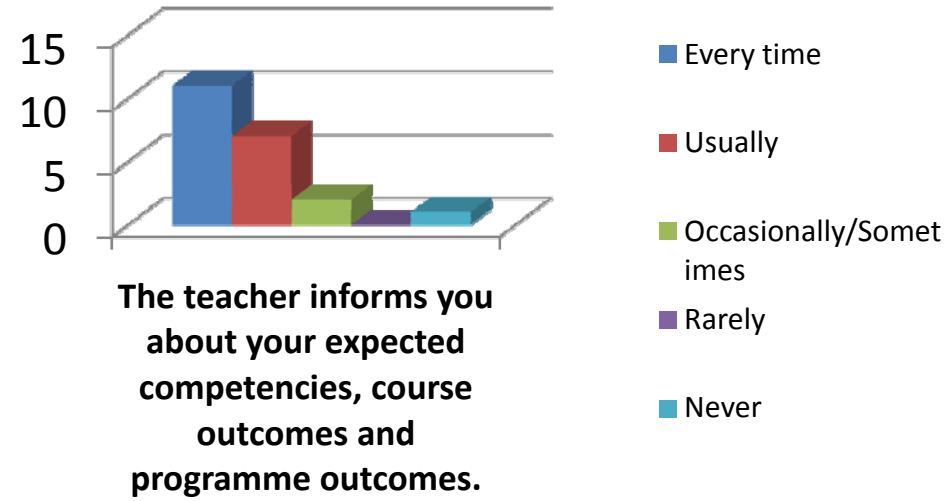
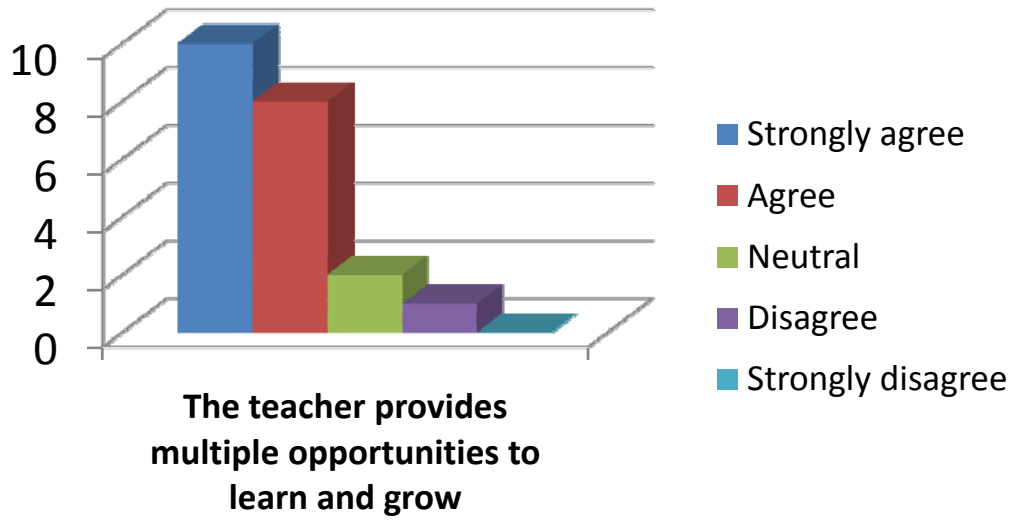


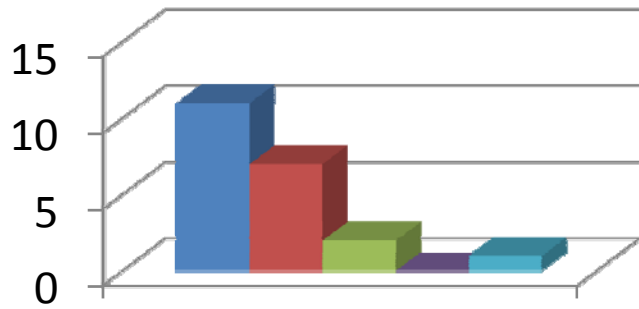
The teacher's approach to teaching can best be described as

- Excellent
- Very Good
- Good
- Fair
- Poor



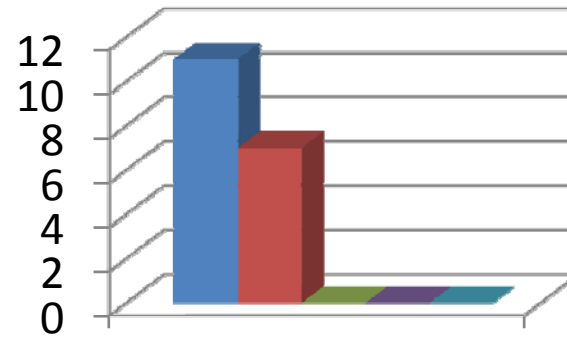






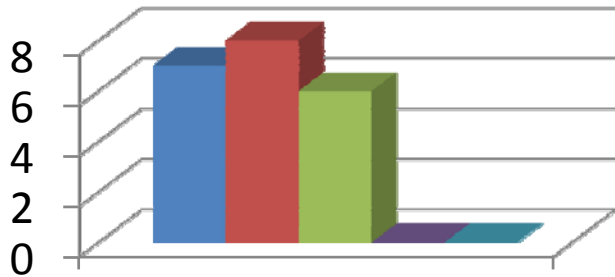
**The teacher identifies your strengths and encourage you with providing right level of challenges.**

- Fully
- Reasonably
- Partially
- Slightly
- Unable to



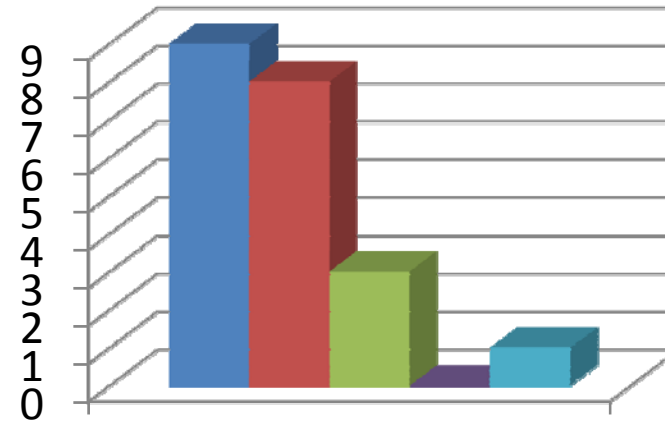
**Teacher is able to identify your weaknesses and help you to overcome them.**

- Every time
- Usually
- Occasionally/Sometimes
- Rarely
- Never



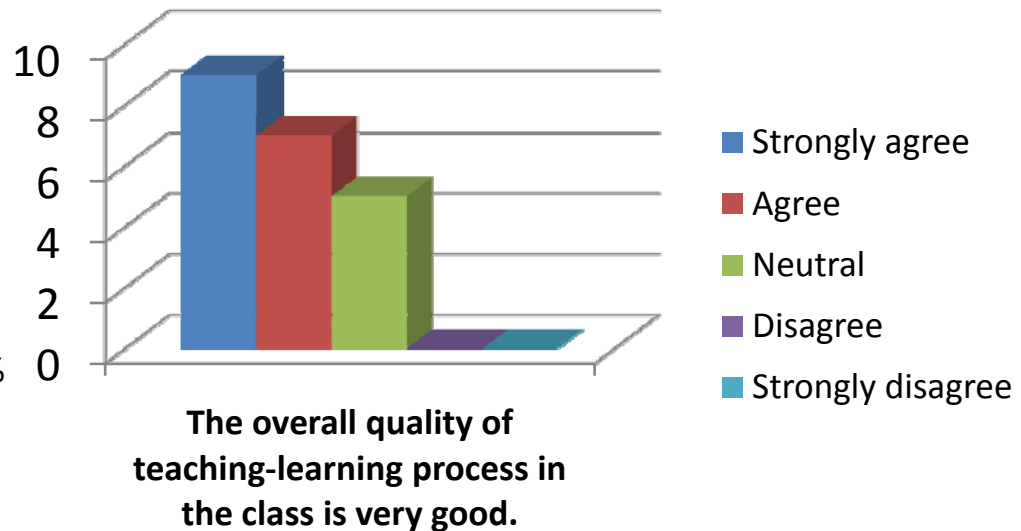
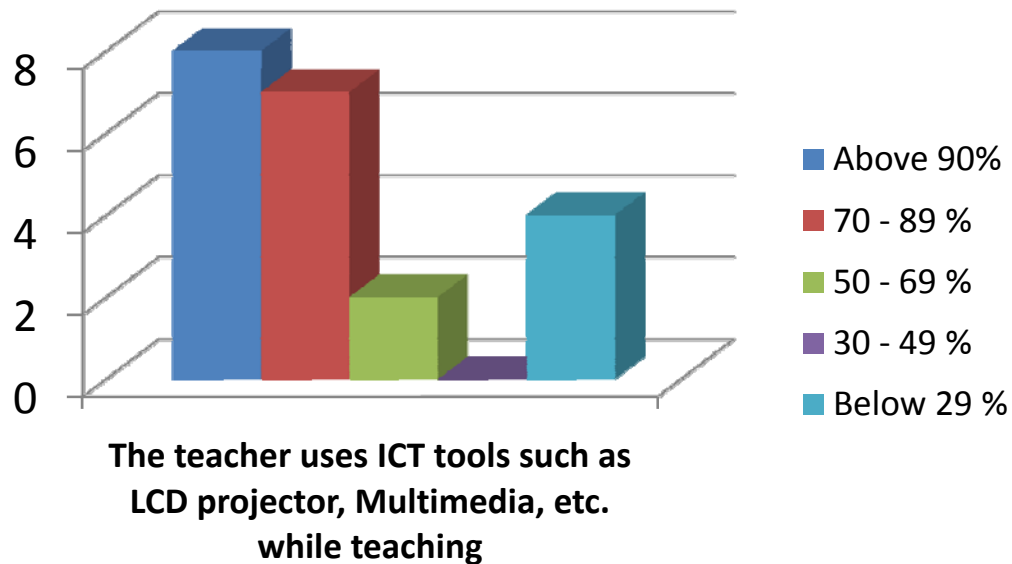
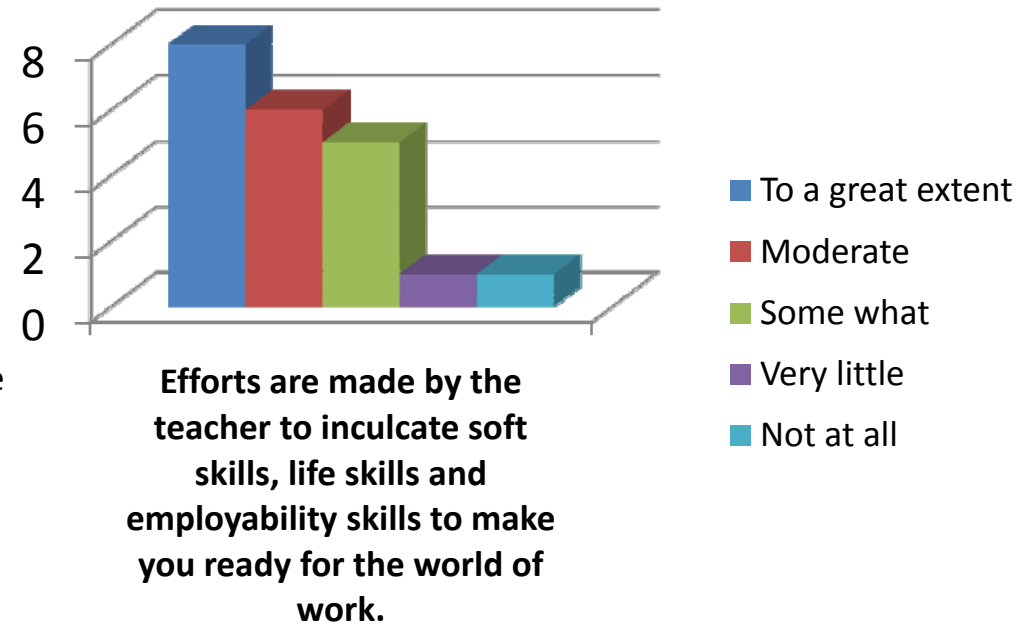
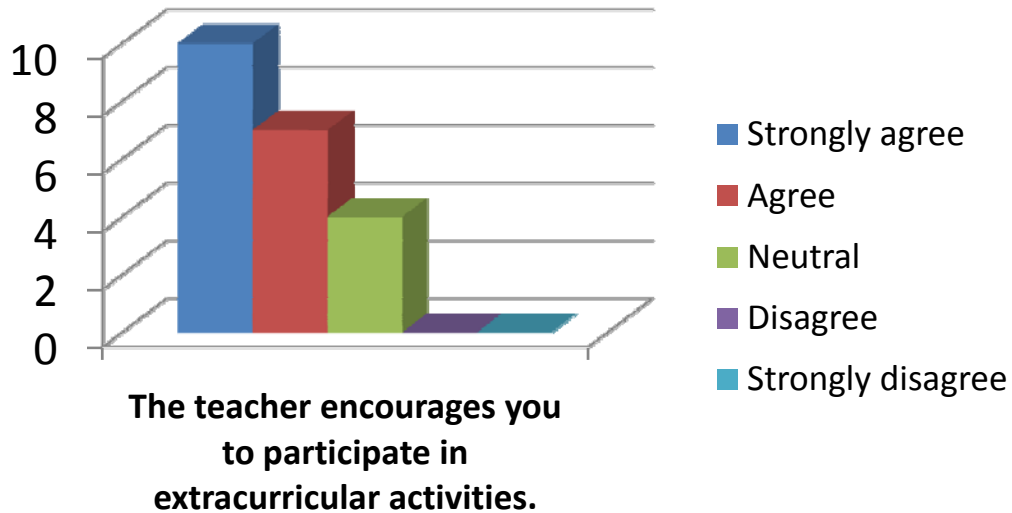
**The teacher makes effort to engage students in the monitoring, review and continuous quality improvement of the teaching learning process.**

- Strongly agree
- Agree
- Neutral
- Disagree
- Strongly disagree

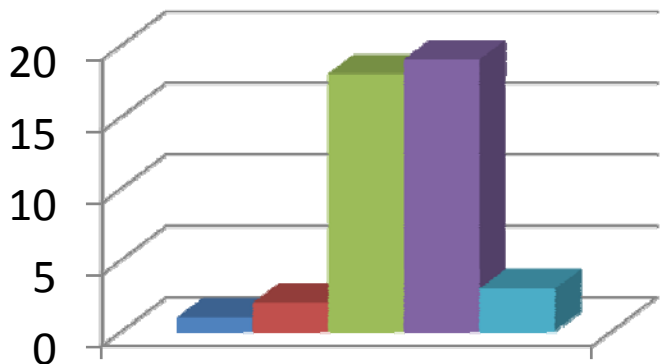


**The teacher uses the student centric methods, such as experiential learning, participative learning and problem solving for enhancing learning experiences.**

- To a great extent
- Moderate
- Some what
- Very little
- Not at all

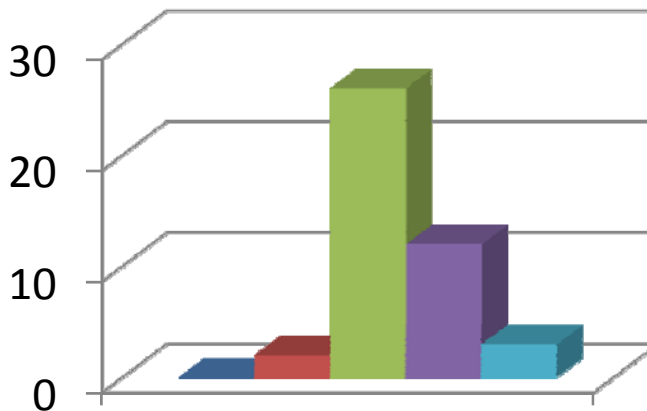


# Mrs.D.Supriya



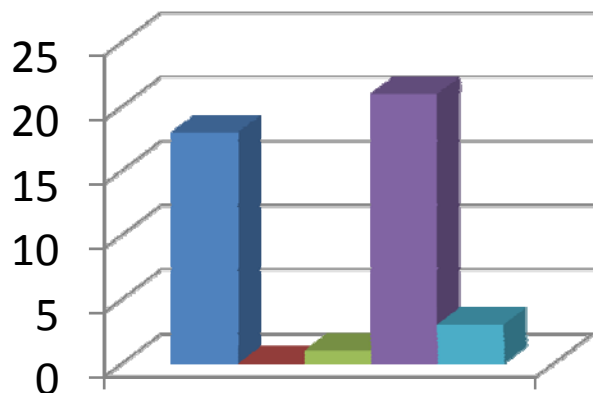
How much of the syllabus was covered by the teacher?

- Below 30%
- 30 - 54%
- 55 - 69%
- 70 - 84%
- 85 - 100%



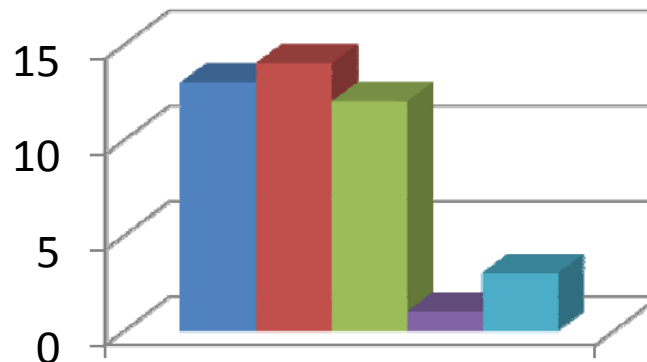
How well did your teacher prepare for the classes?

- Thoroughly
- Satisfactorily
- Poorly
- Indifferently
- Won't teach at all



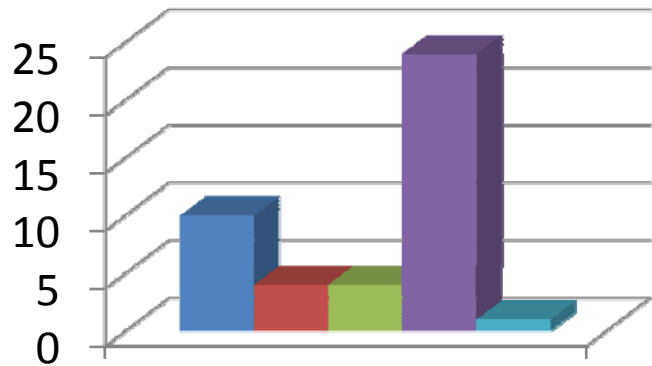
How well is the teacher able to communicate?

- Always effective
- Sometimes effective
- Just satisfactorily
- Generally ineffective
- Very poor communication



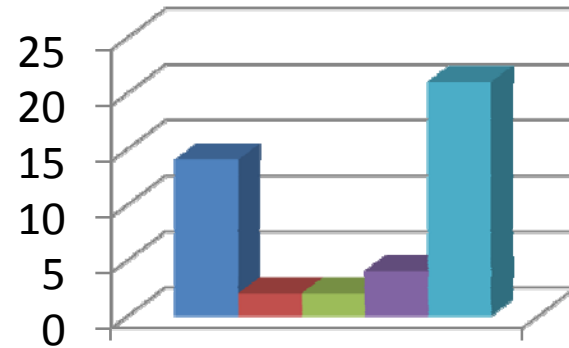
The teacher's approach to teaching can best be described as

- Excellent
- Very Good
- Good
- Fair
- Poor



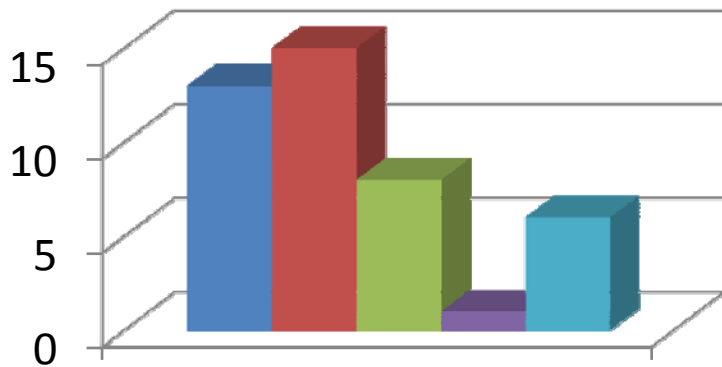
**Fairness of the internal evaluation process by the teacher**

- Always Fair
- Usually Fair
- Sometimes unfair
- Usually unfair
- Unfair



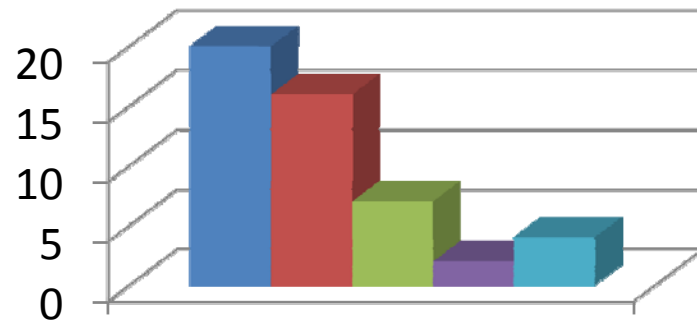
**Was your performance in assignments discussed with you?**

- Everytime
- Usually
- Occasionally/Sometimes
- Rarely
- Never



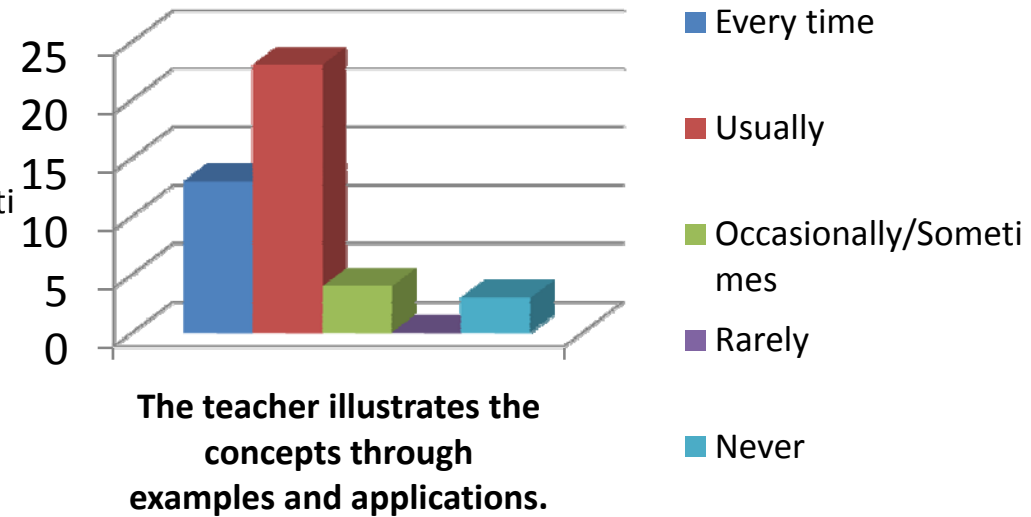
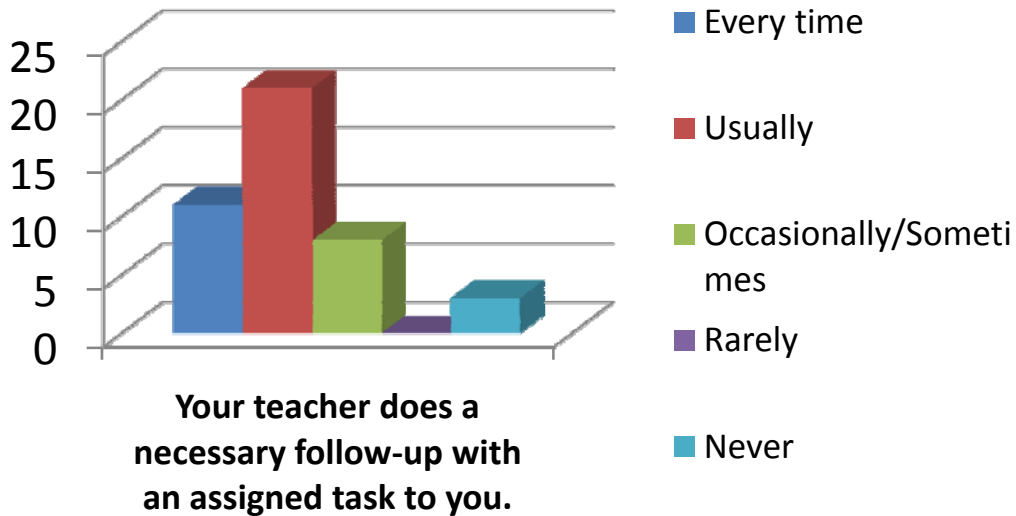
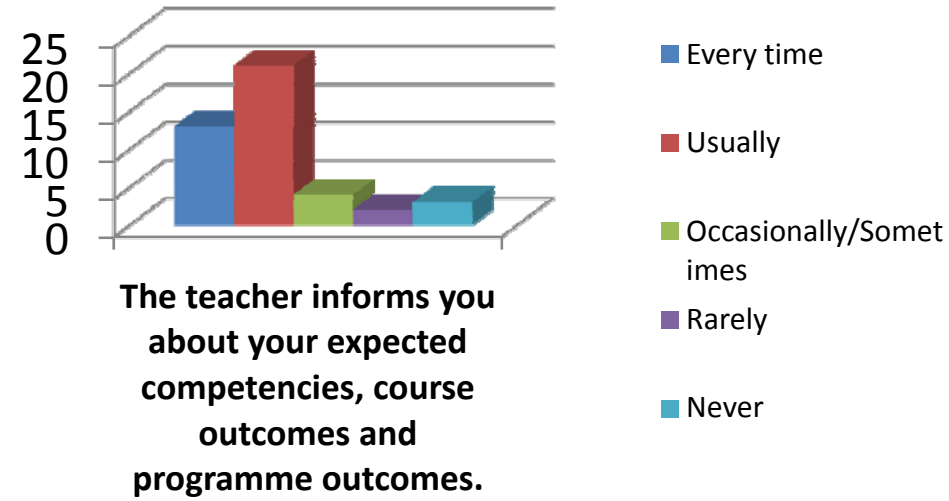
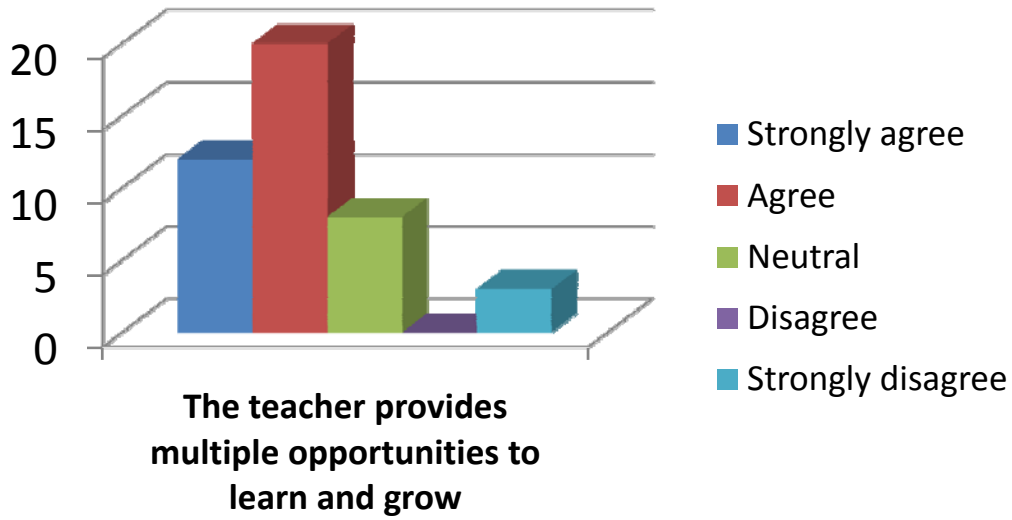
**The teacher takes active interest in arranging field visits for students**

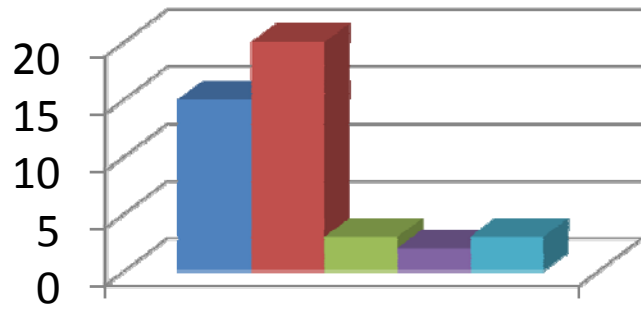
- Regularly
- Often
- Sometimes
- Rarely
- Never



**The teaching process in the classroom facilitates you in cognitive, social and emotional growth.**

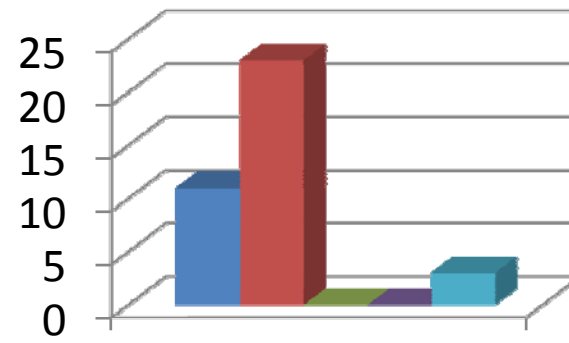
- Significantly
- Very Well
- Moderately
- Marginally
- Not at all





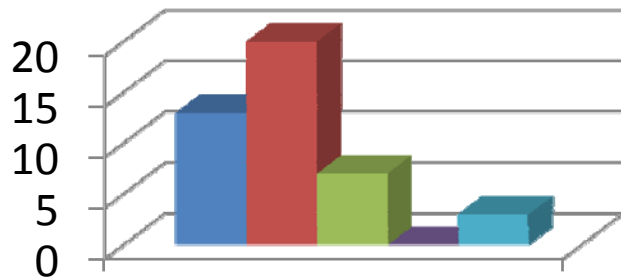
**The teacher identifies your strengths and encourage you with providing right level of challenges.**

- Fully
- Reasonably
- Partially
- Slightly
- Unable to



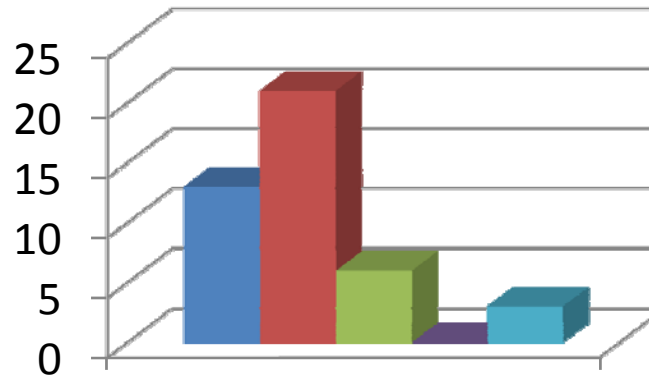
**Teacher is able to identify your weaknesses and help you to overcome them.**

- Every time
- Usually
- Occasionally/Sometimes
- Rarely
- Never



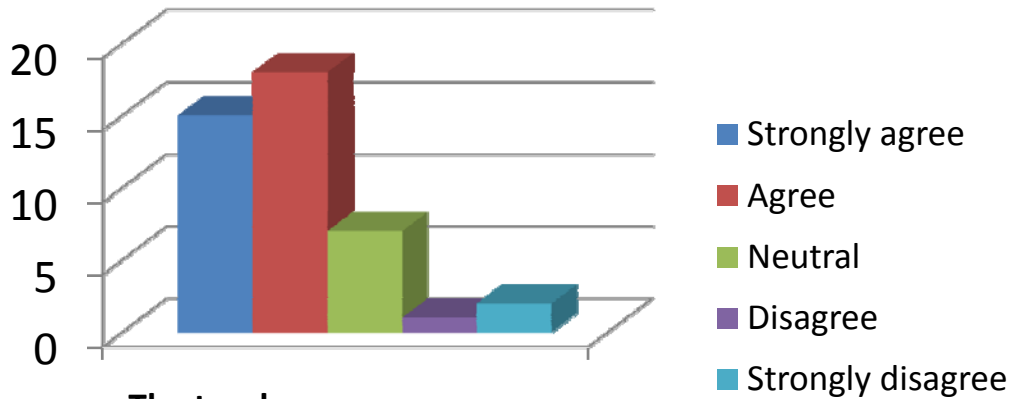
**The teacher makes effort to engage students in the monitoring, review and continuous quality improvement of the teaching learning process.**

- Strongly agree
- Agree
- Neutral
- Disagree
- Strongly disagree

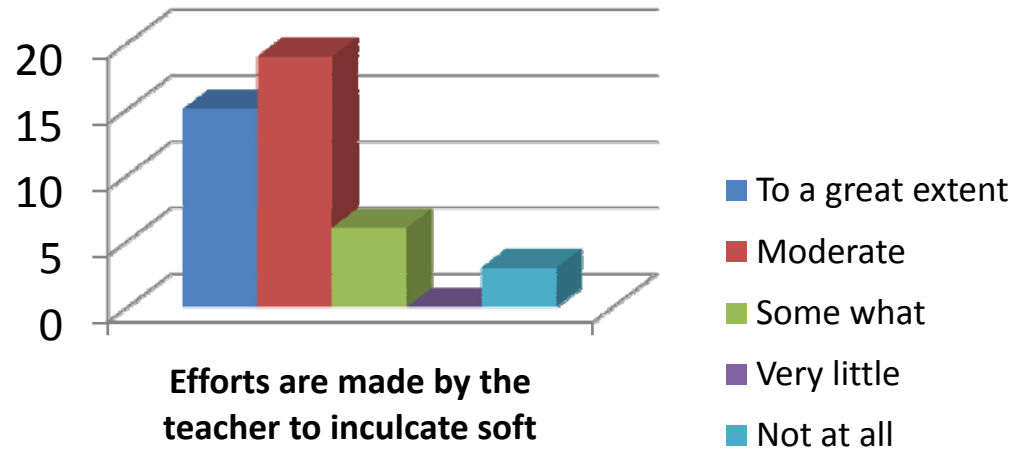


**The teacher uses the student centric methods, such as experiential learning, participative learning and problem solving for enhancing learning experiences.**

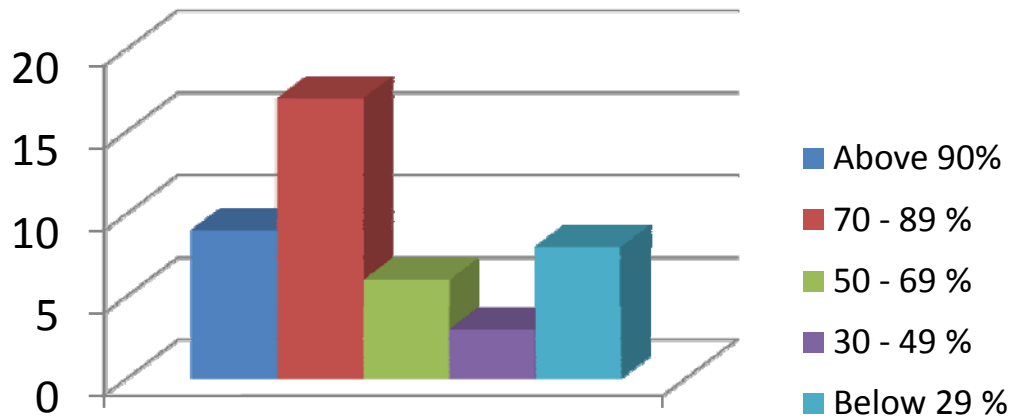
- To a great extent
- Moderate
- Some what
- Very little
- Not at all



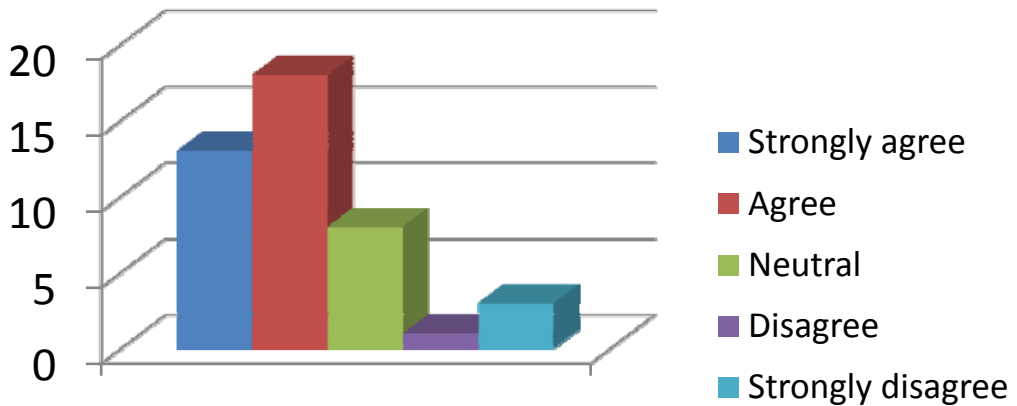
**The teacher encourages you to participate in extracurricular activities.**



**Efforts are made by the teacher to inculcate soft skills, life skills and employability skills to make you ready for the world of work.**



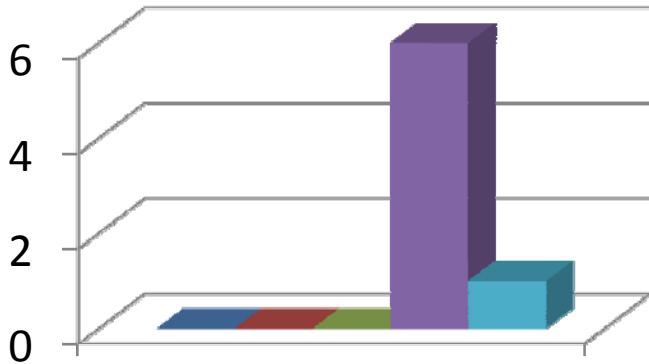
**The teacher uses ICT tools such as LCD projector, Multimedia, etc. while teaching**



**The overall quality of teaching-learning process in the class is very good.**

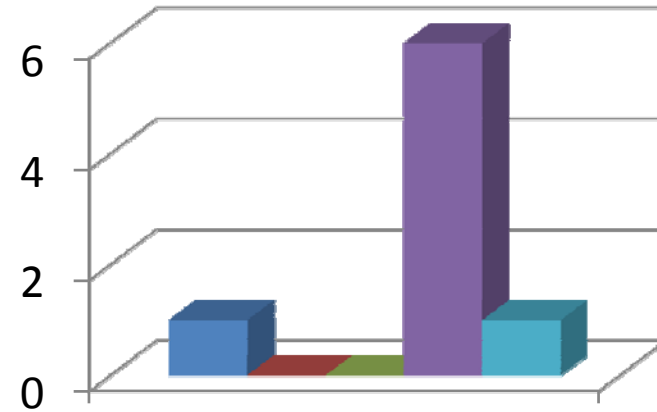


# Mrs.B.Radha



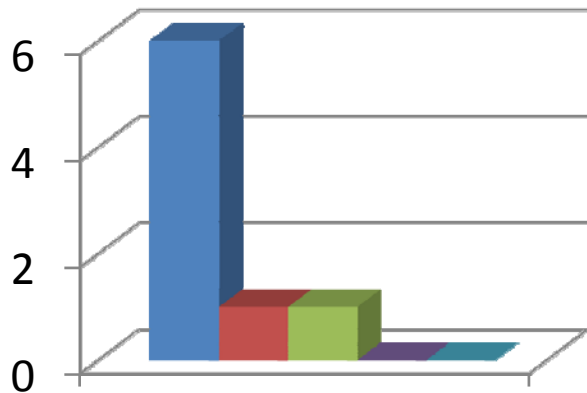
How much of the syllabus was covered by the teacher?

- Below 30%
- 30 - 54%
- 55 - 69%
- 70 - 84%
- 85 - 100%



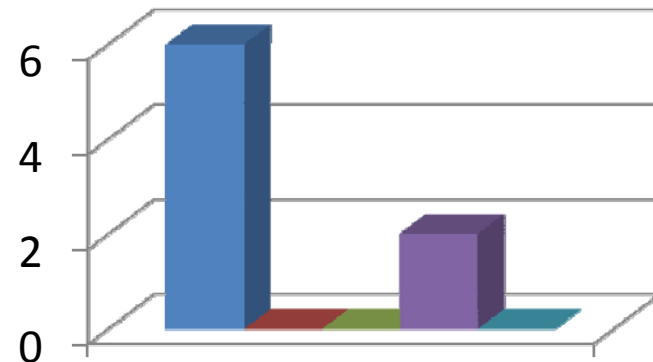
How well did your teacher prepare for the classes?

- Thoroughly
- Satisfactorily
- Poorly
- Indifferently
- Won't teach at all



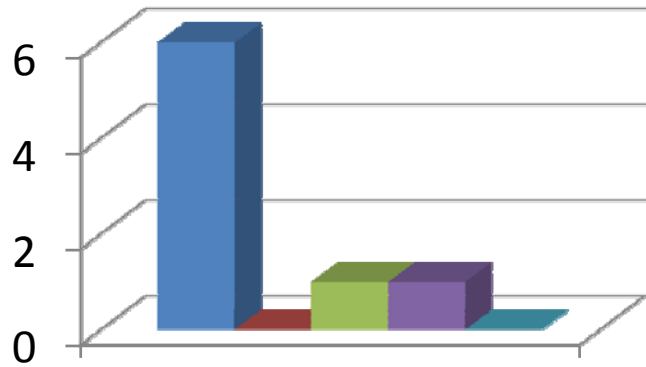
How well is the teacher able to communicate?

- Always effective
- Sometimes effective
- Just satisfactorily
- Generally ineffective
- Very poor communication



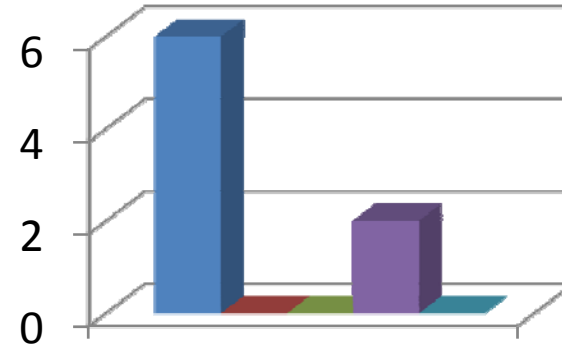
The teacher's approach to teaching can best be described as

- Excellent
- Very Good
- Good
- Fair
- Poor



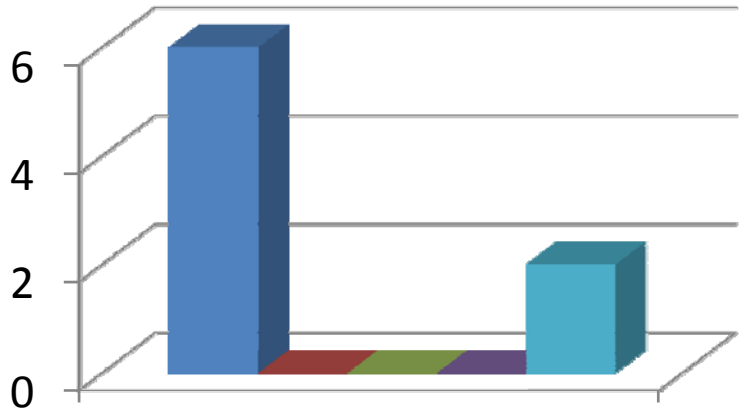
**Fairness of the internal evaluation process by the teacher**

- Always Fair
- Usually Fair
- Sometimes unfair
- Usually unfair
- Unfair



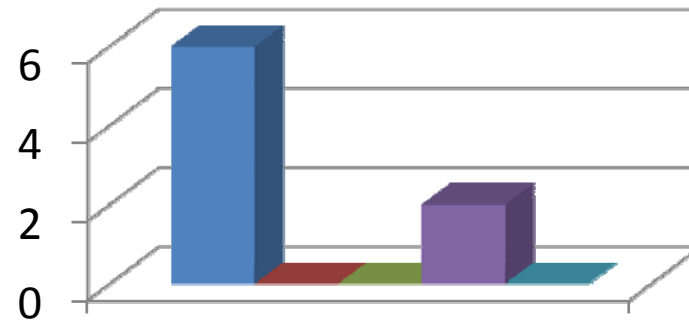
**Was your performance in assignments discussed with you?**

- Evertime
- Usually
- Occasionally/Sometimes
- Rarely
- Never



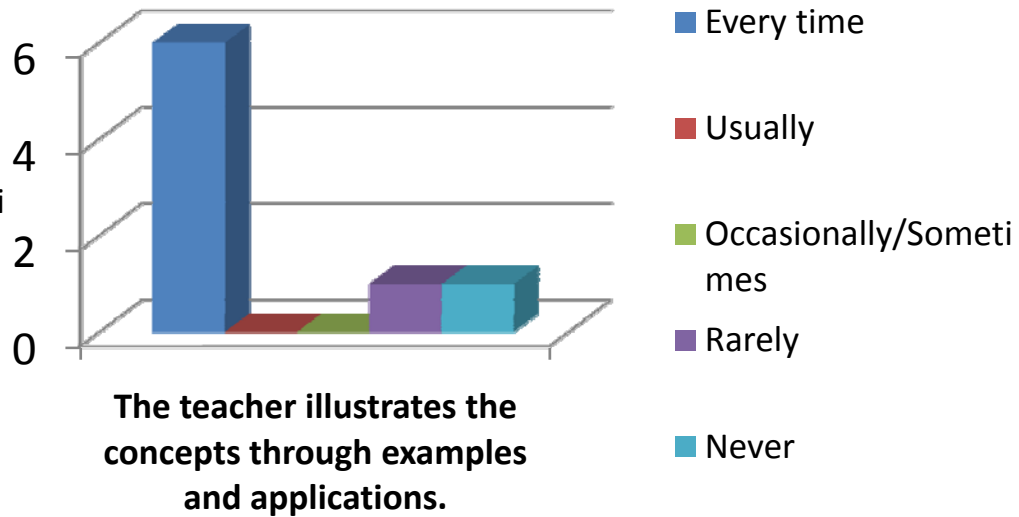
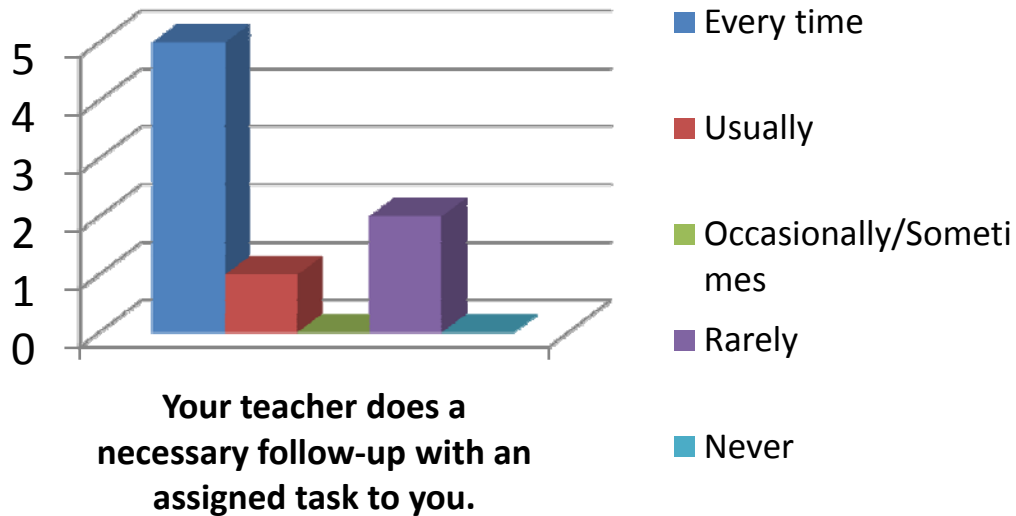
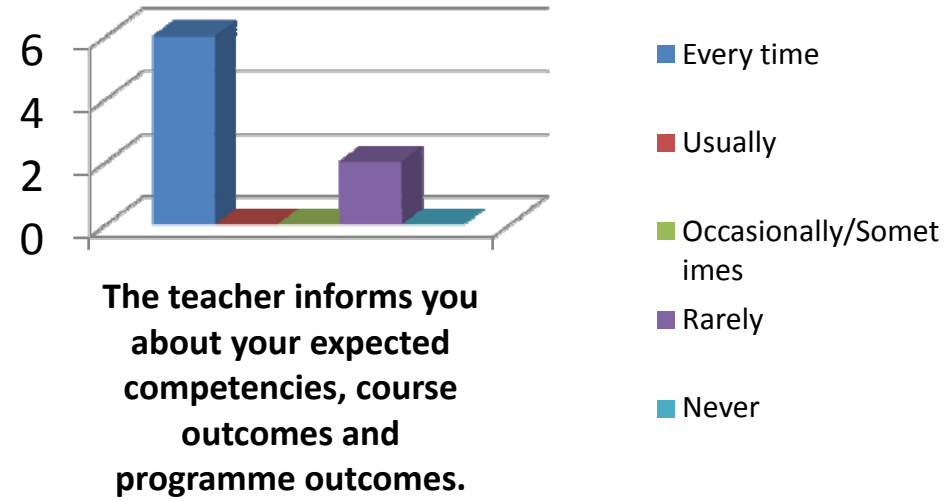
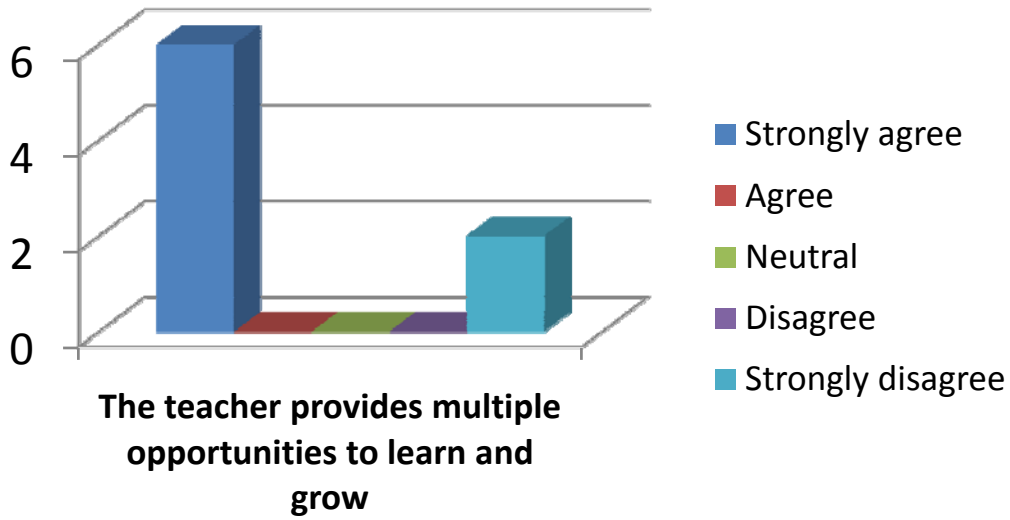
**The teacher takes active interest in arranging field visits for students**

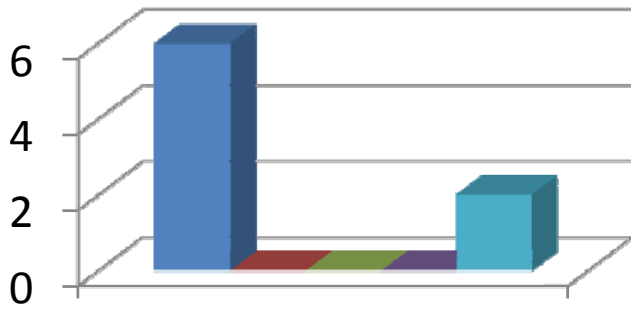
- Regularly
- Often
- Sometimes
- Rarely
- Never



**The teaching process in the classroom facilitates you in cognitive, social and emotional growth.**

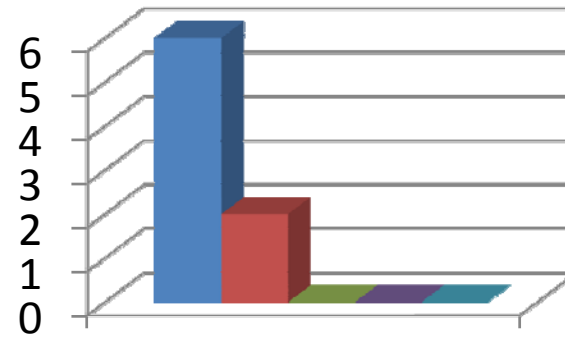
- Significantly
- Very Well
- Moderately
- Marginally
- Not at all





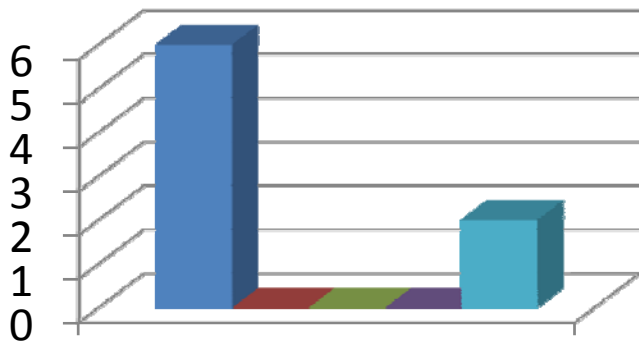
**The teacher identifies your strengths and encourage you with providing right level of challenges.**

- Fully
- Reasonably
- Partially
- Slightly
- Unable to



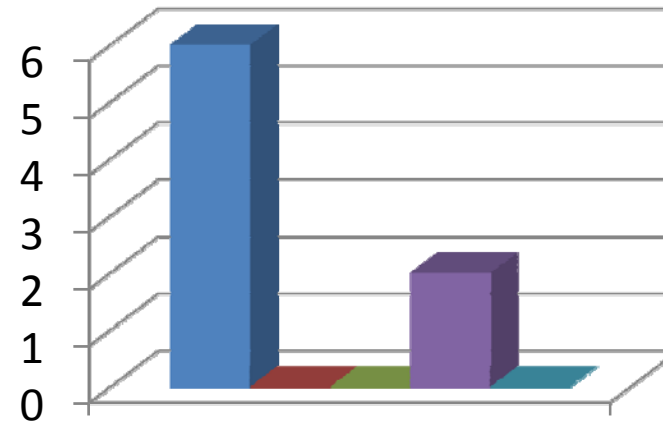
**Teacher is able to identify your weaknesses and help you to overcome them.**

- Every time
- Usually
- Occasionally/Sometimes
- Rarely
- Never



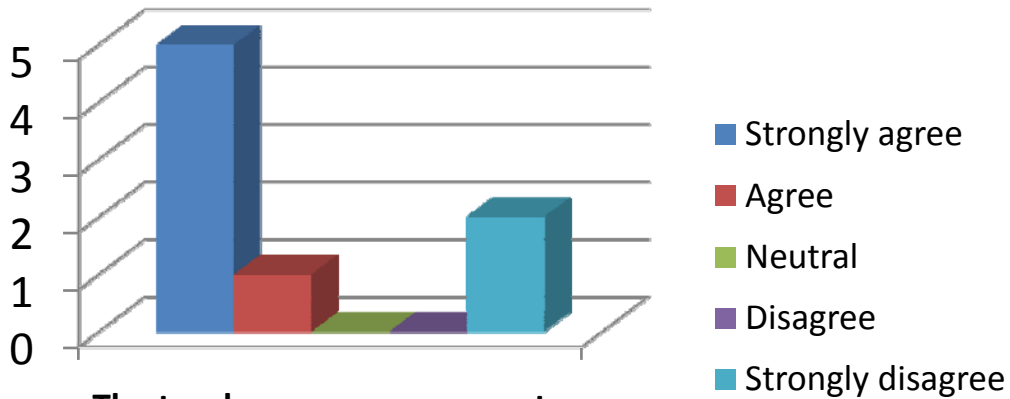
**The teacher makes effort to engage students in the monitoring, review and continuous quality improvement of the teaching learning process.**

- Strongly agree
- Agree
- Neutral
- Disagree
- Strongly disagree

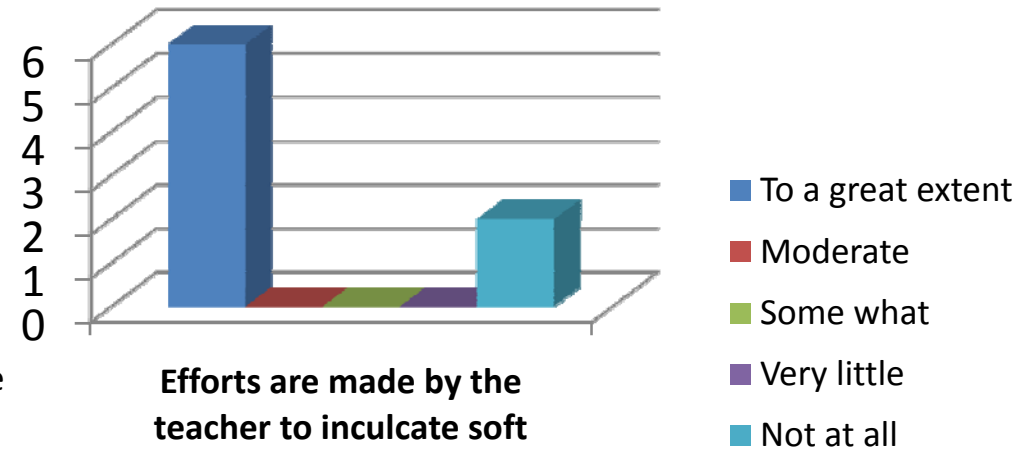


**The teacher uses the student centric methods, such as experiential learning, participative learning and problem solving for enhancing learning experiences.**

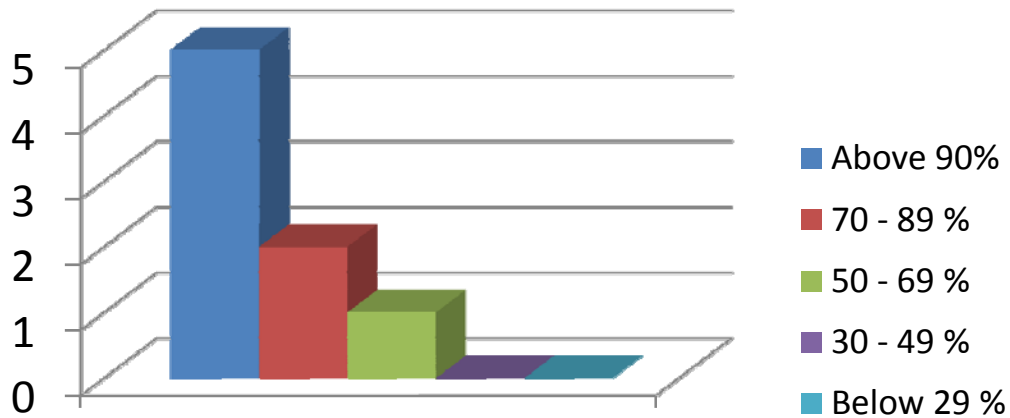
- To a great extent
- Moderate
- Some what
- Very little
- Not at all



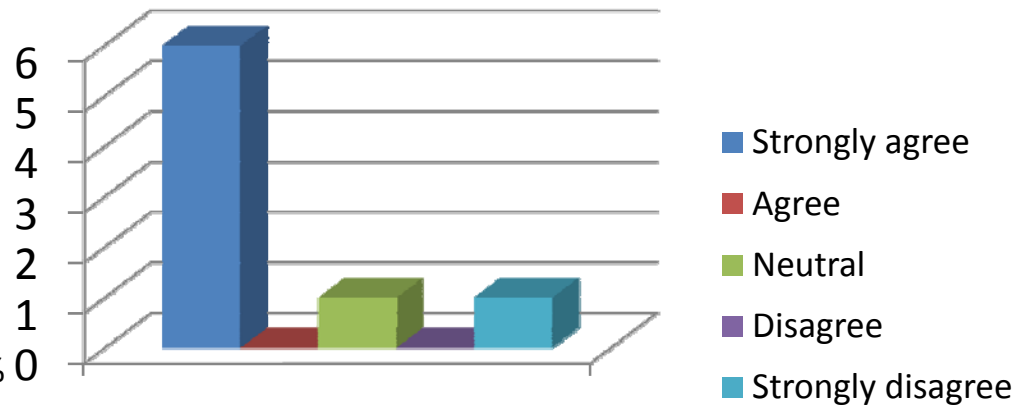
**The teacher encourages you to participate in extracurricular activities.**



**Efforts are made by the teacher to inculcate soft skills, life skills and employability skills to make you ready for the world of work.**



**The teacher uses ICT tools such as LCD projector, Multimedia, etc. while teaching**



**The overall quality of teaching-learning process in the class is very good.**